

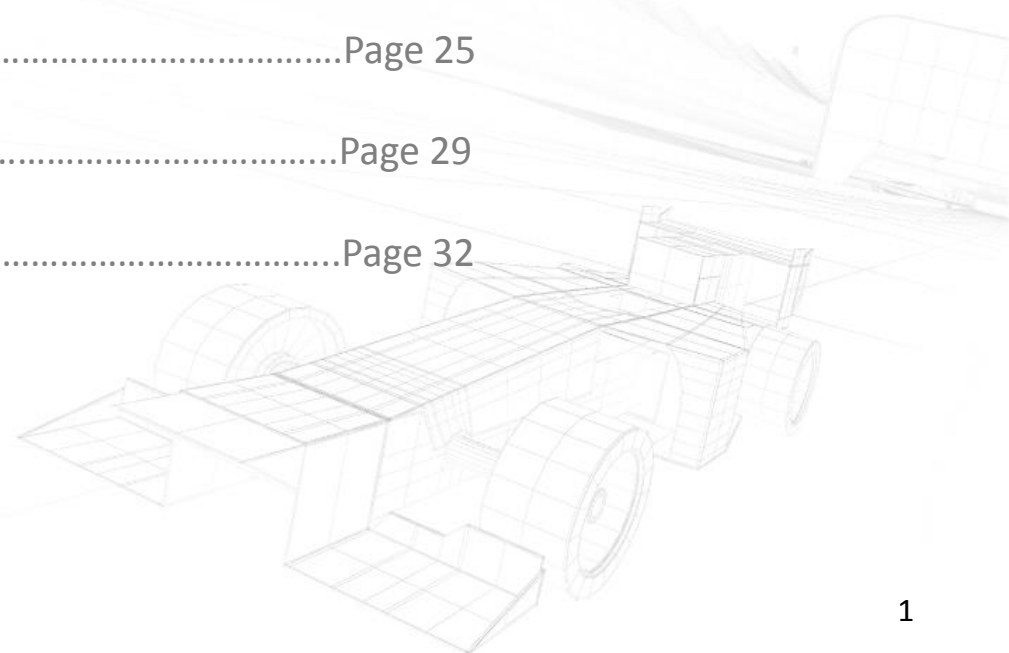
فورمولا إشارة
FORMULA
ETHARA

Silhouette Cameo 3 Setup and User Guide



Contents

Section 1 – About the Silhouette Cameo 3.....	Page 2
Section 2 - Unpacking your Machine.....	Page 4
Section 3 – Getting things setup.....	Page 11
Section 4 – Download and install software.....	Page 15
Section 5 – Open software and cutting file.....	Page 18
Section 6 – Using the cutting mat.....	Page 21
Section 7 - Load cutting mat in machine.....	Page 25
Section 8 – Send and cut.....	Page 29
Section 9 – Unload and ‘weed’.....	Page 32



About the Silhouette Cameo 3

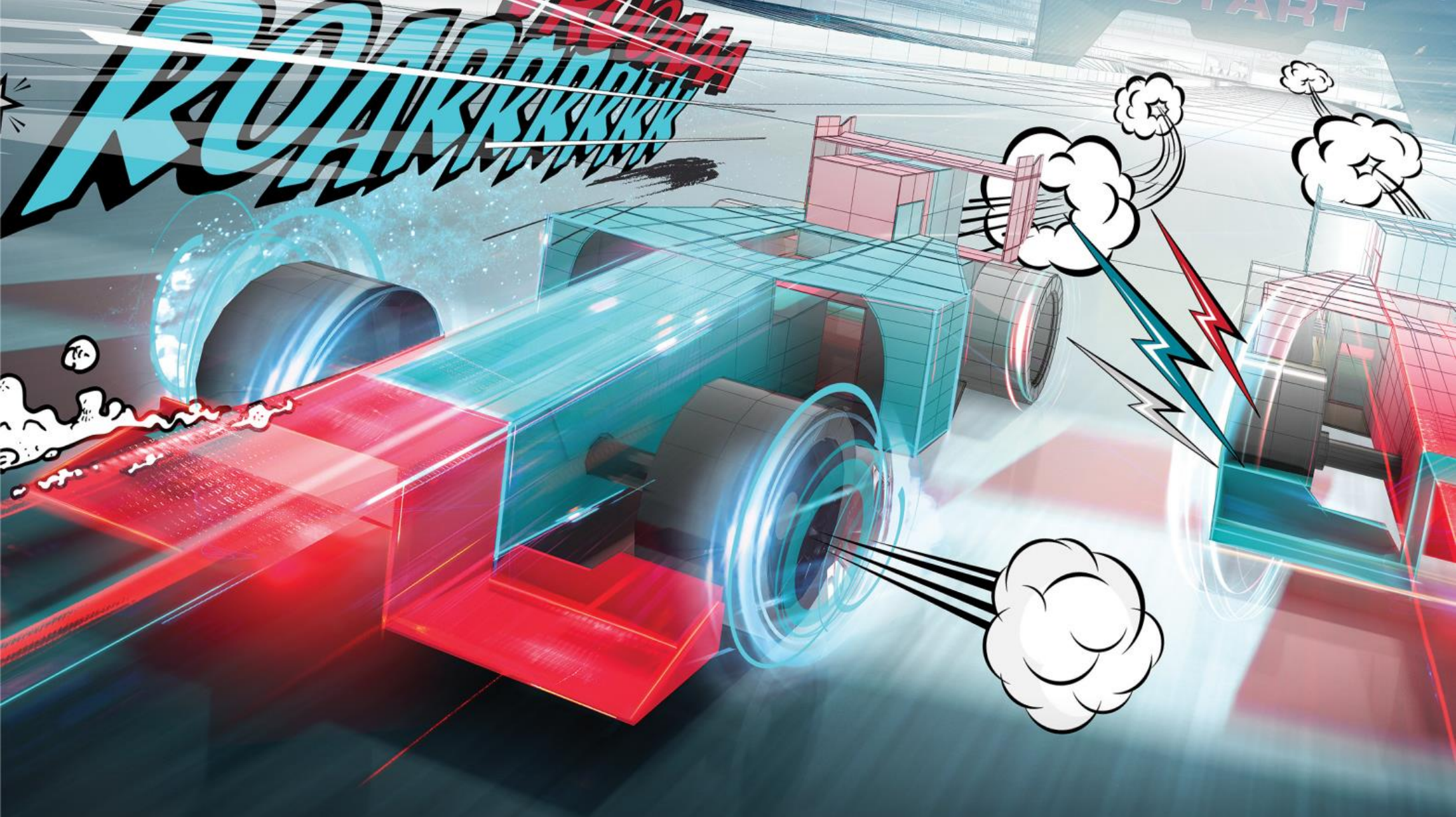


The Silhouette CAMEO® is a Computer Aided Manufacture (CAM) electronic cutting tool which has been specially chosen for the FORMULA ETHARA project. It uses a small blade to cut over 100 materials, including paper, cardstock, vinyl, and fabric up to 12 in. wide. The CAMEO has the ability to register and cut printed designs. The machine features a dual-carriage so you can use two cutting tools at once.

To Learn More General Information - [WATCH THIS VIDEO](#) or visit <http://www.silhouetteamerica.com/>

Your ETHARA Silhouette CAMEO® Pack Contains:

1 x Cameo 3 Machine, 1 x Standard 12-inch Cutting Mat, 1 x Spare 12-inch Cutting Mat, 1 x Auto Blade, (OPTIONAL SPARES - 1 x Premium Blade OR 1 x Ratchet Blade), 1 x Crosscutter, 1 x Power cable/USB cable, OPTIONAL Cameo 3 Dust Cover.



UNPACKING YOUR MACHINE

1. Unpack your machine



1. Locate the package box



2. Carefully open – look after the packaging for re-using

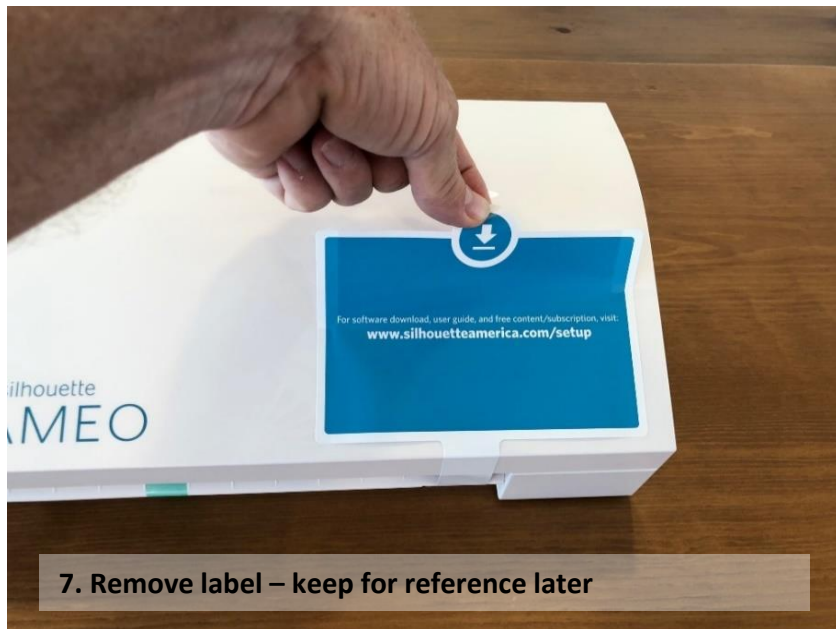


3. Remove these accessory items from the top



4. Remove the Cameo from box - lift by the foam packing

Unpacking continued...



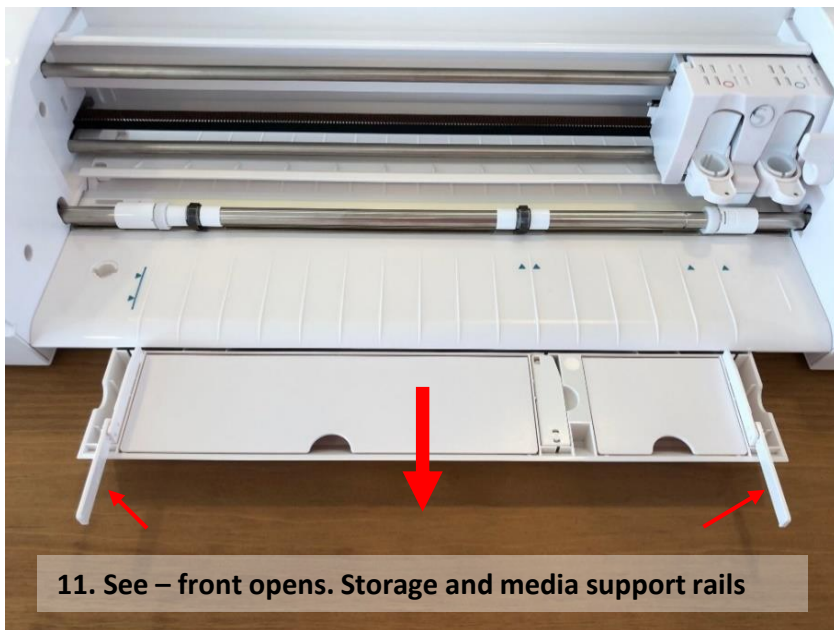
Unpacking continued...



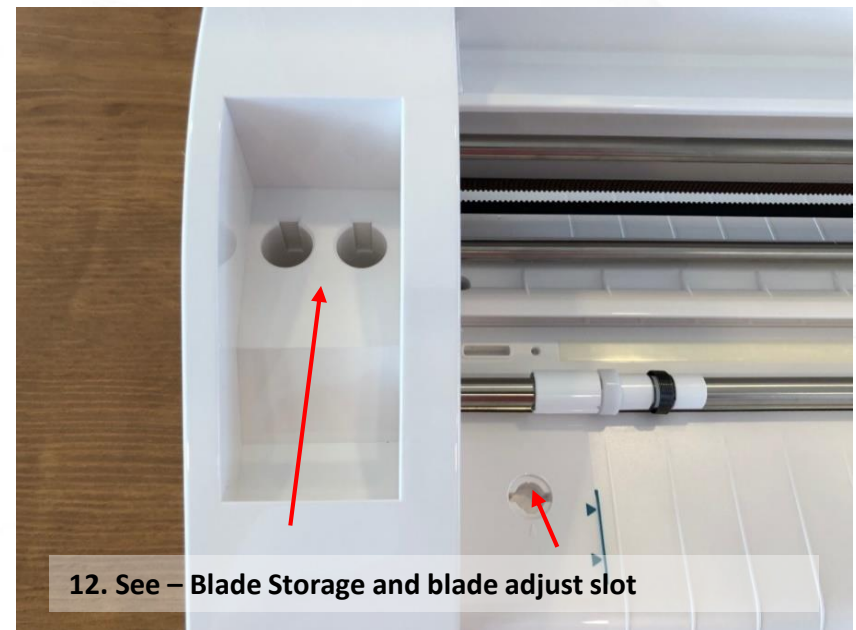
9. Carefully slide the carriage to the left



10. Remove the small foam packing and discard



11. See – front opens. Storage and media support rails

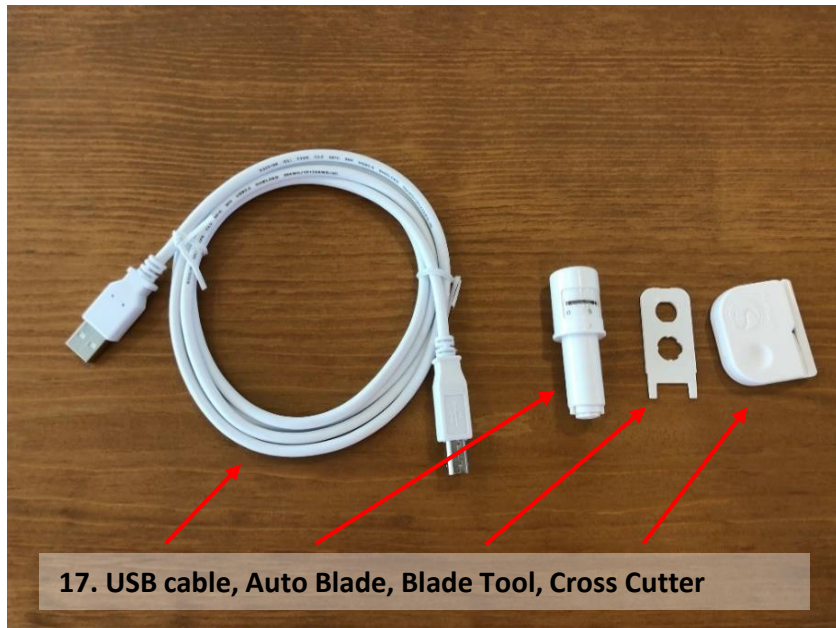


12. See – Blade Storage and blade adjust slot

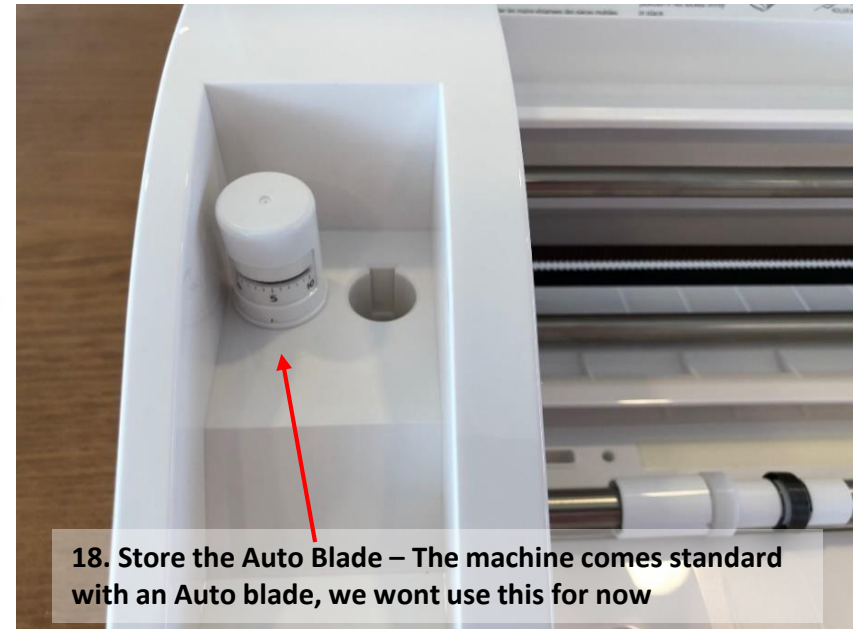
Unpacking continued...



Unpacking continued...



17. USB cable, Auto Blade, Blade Tool, Cross Cutter



18. Store the Auto Blade – The machine comes standard with an Auto blade, we won't use this for now



19. Open the Premium Blade packet



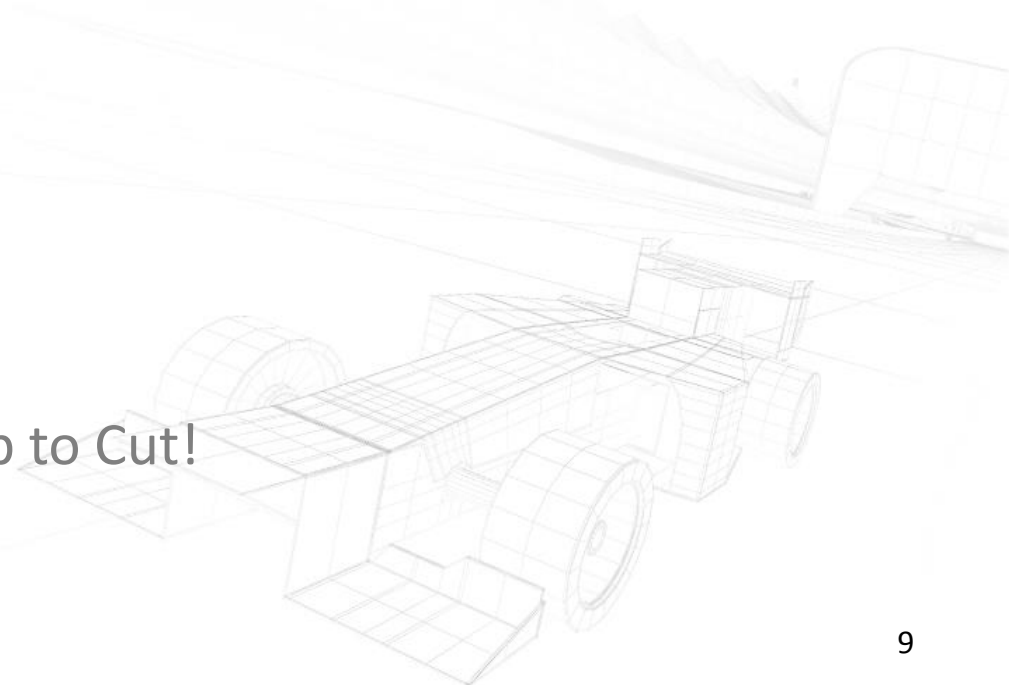
20. It contains 1 x Premium Blade

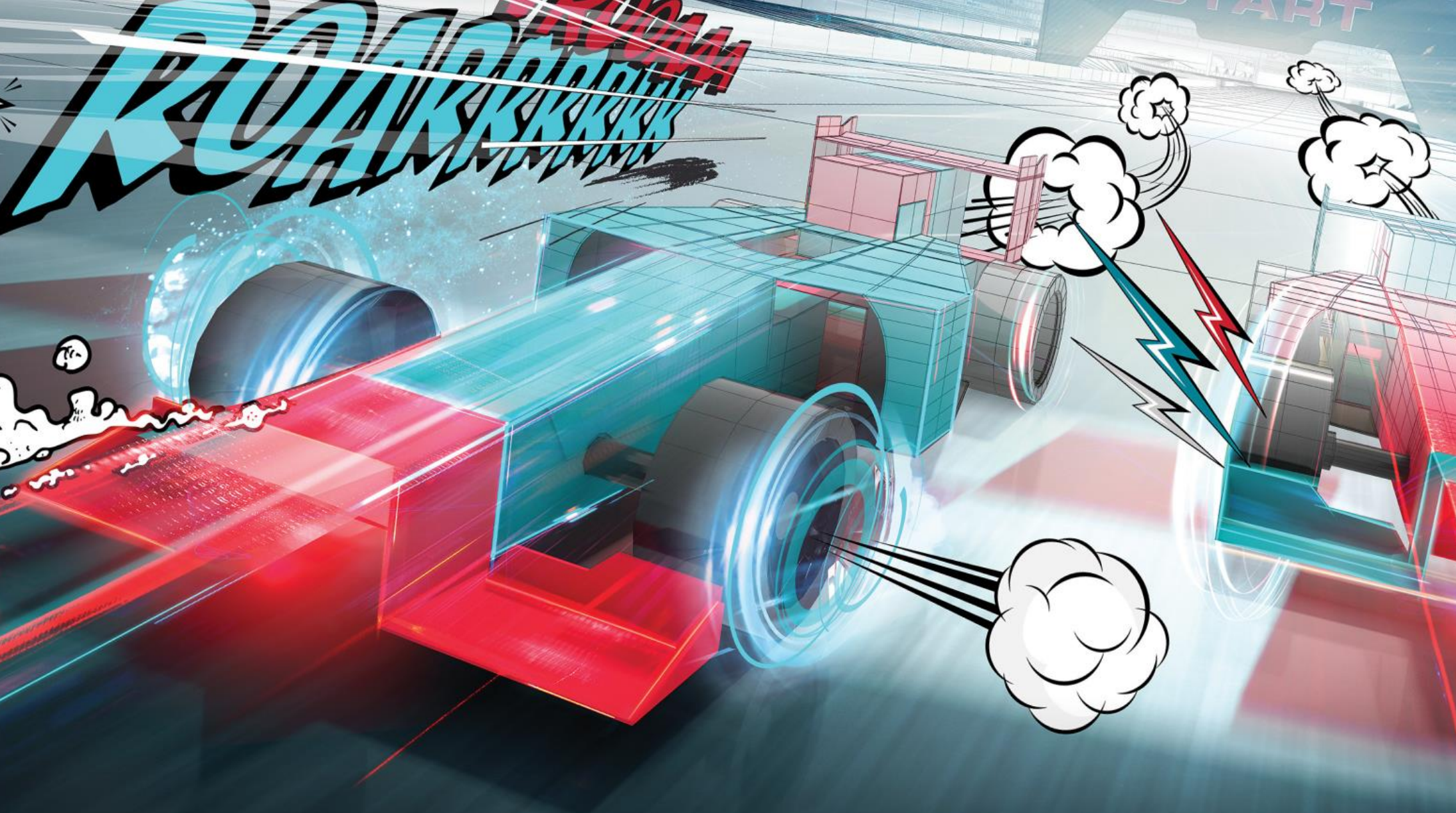
Unpacking continued...



Next...

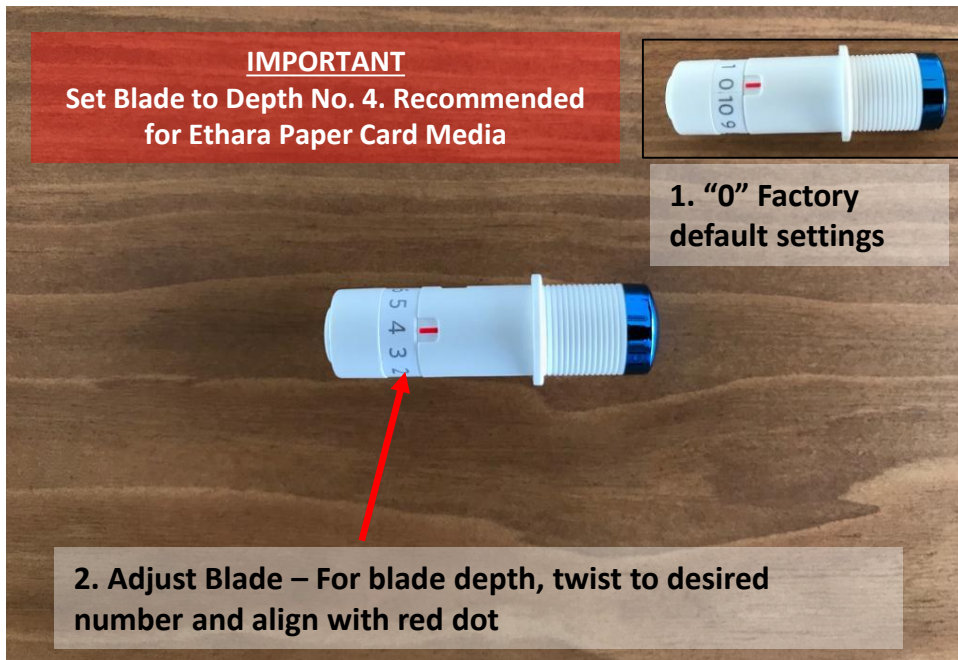
Lets Get Set-Up to Cut!



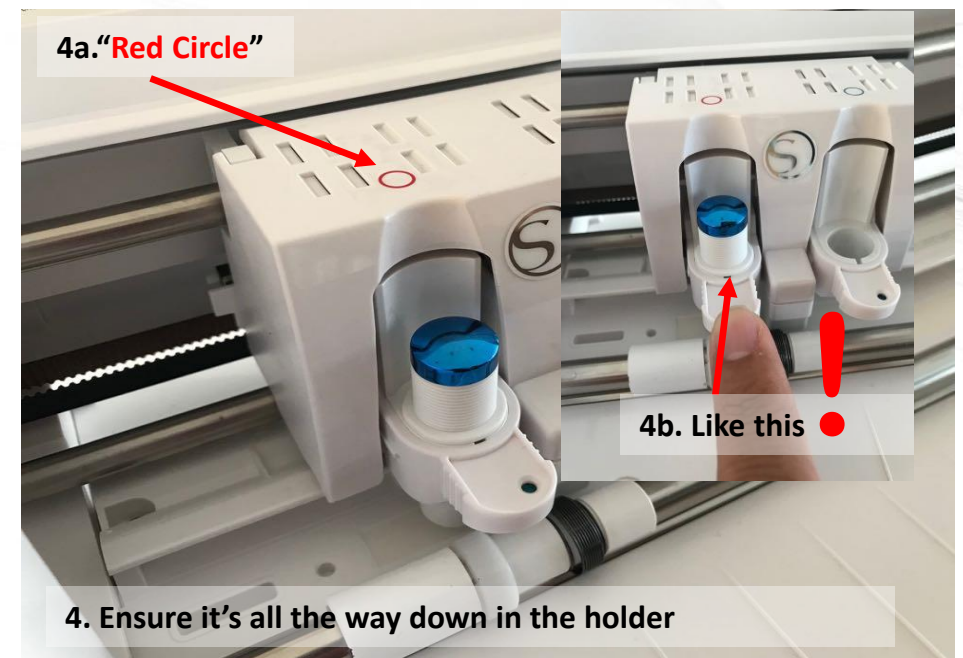
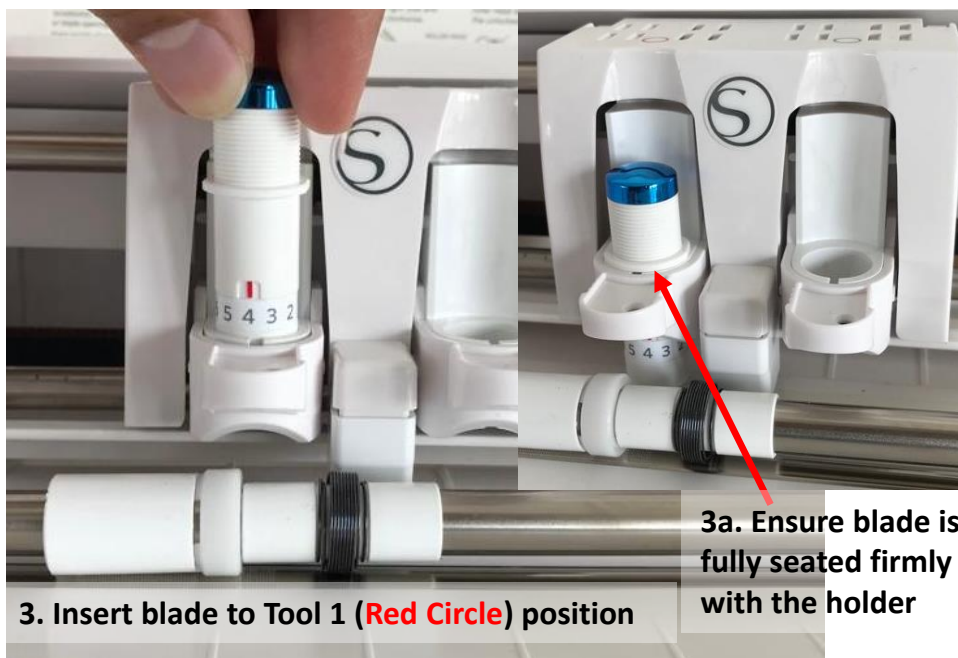


CAMEO 3 SETUP

2. Get things Set Up...



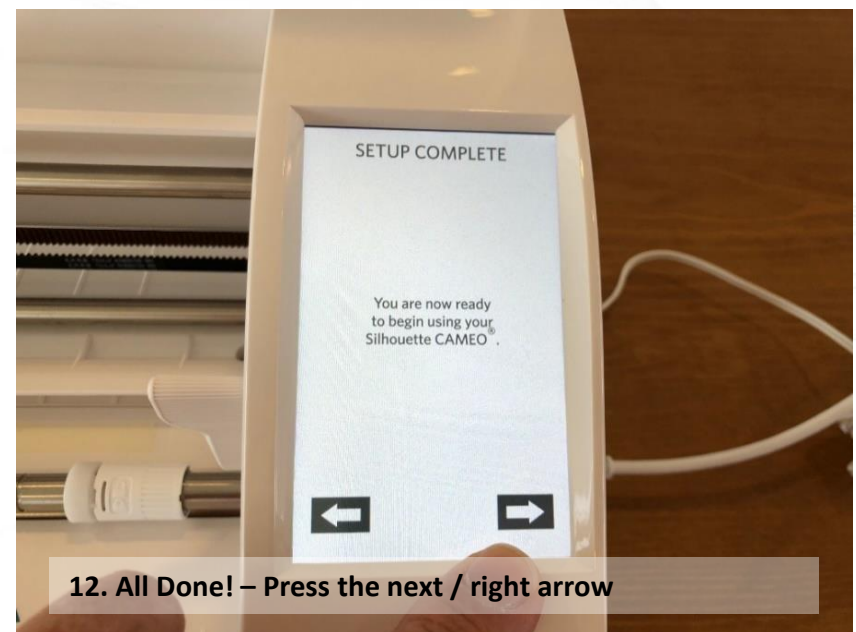
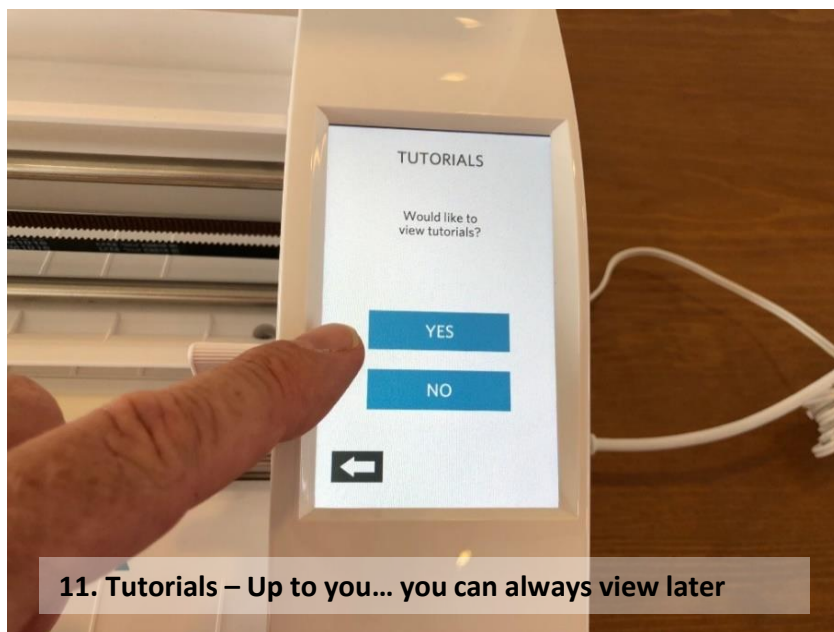
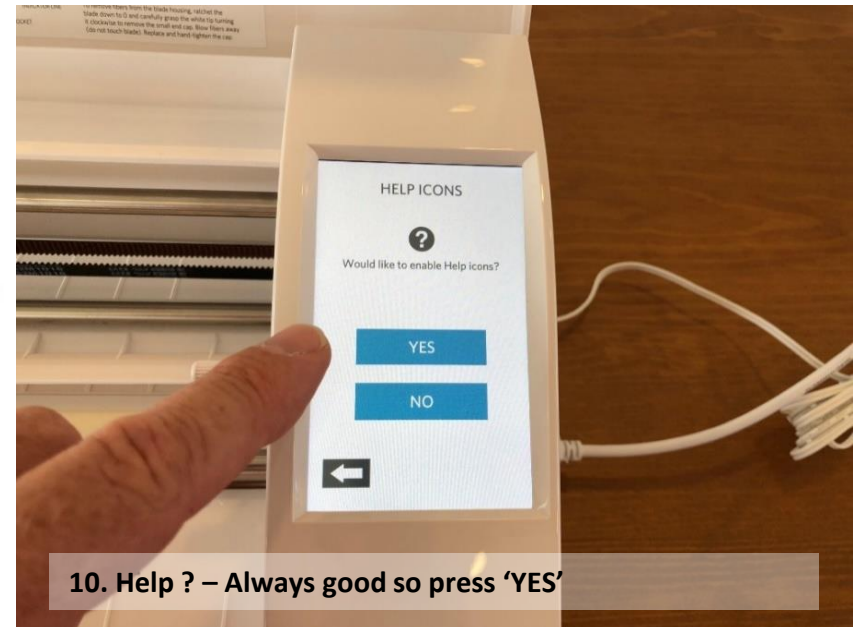
Troubleshooting - Blade Depth of Cut	
Issue	Solution
Blade cutting too deep - The blade is cutting all the way through the cutting mat.	Reduce blade depth of cut. Eg. If set at 6, try setting at 4.
Blade cut too shallow – Parts of the paper card project are not getting cut out.	Increase blade depth of cut. Eg. If set at 4 try setting at 5.
For more troubleshooting support – refer to the user manual in the help section of the Silhouette Studio Software.	

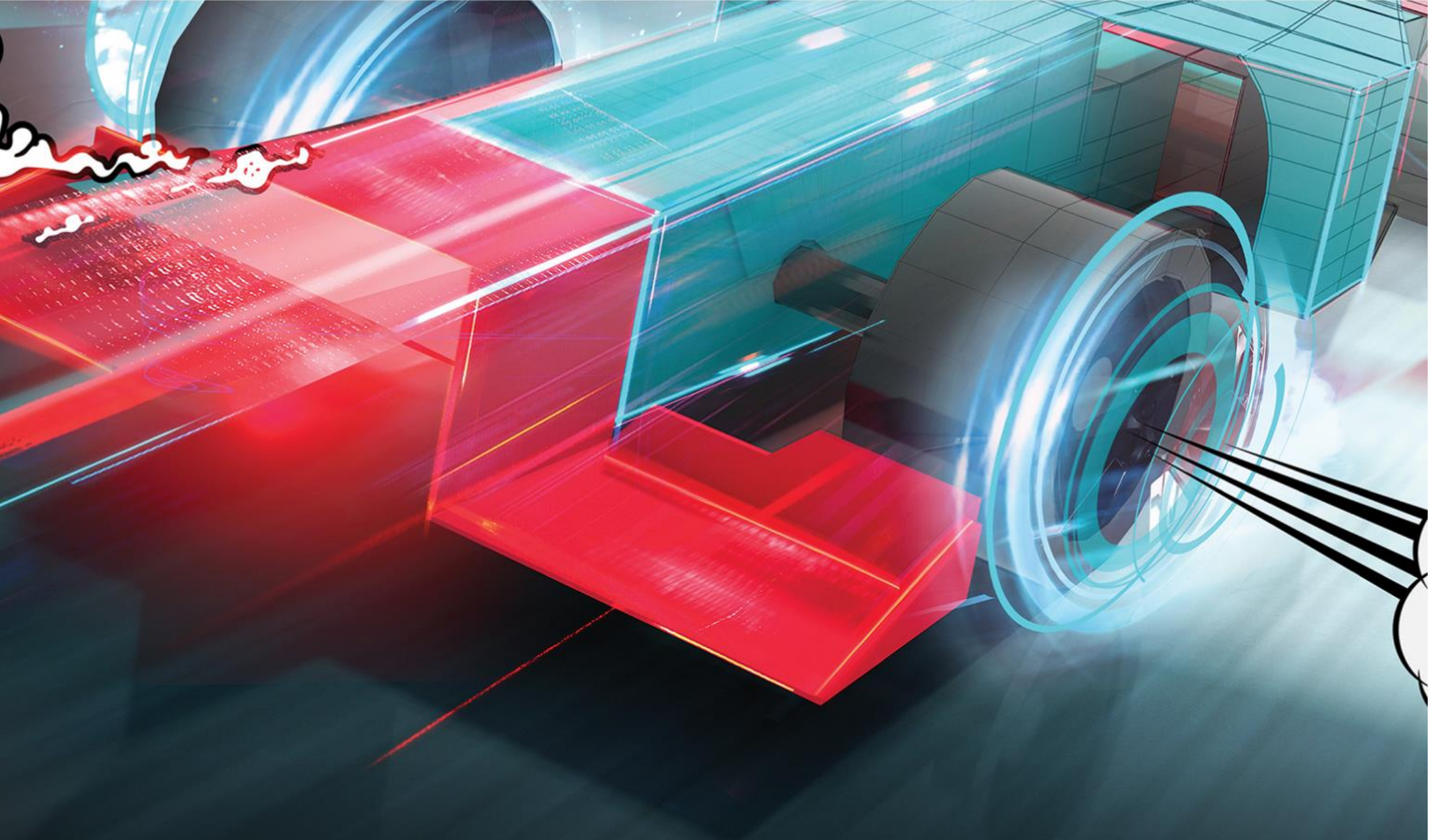


Getting Things Set Up Continued...



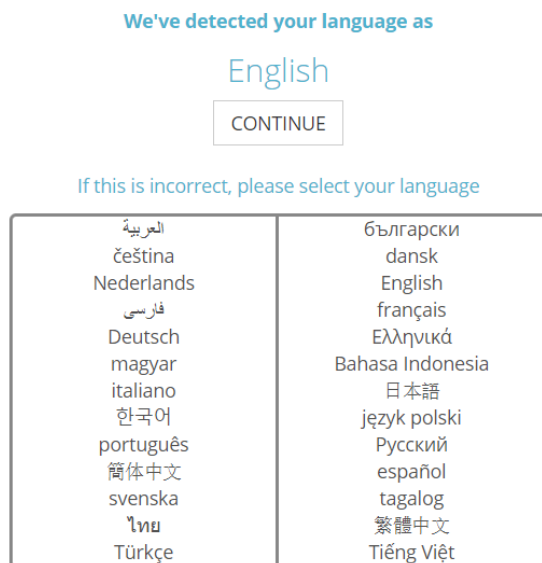
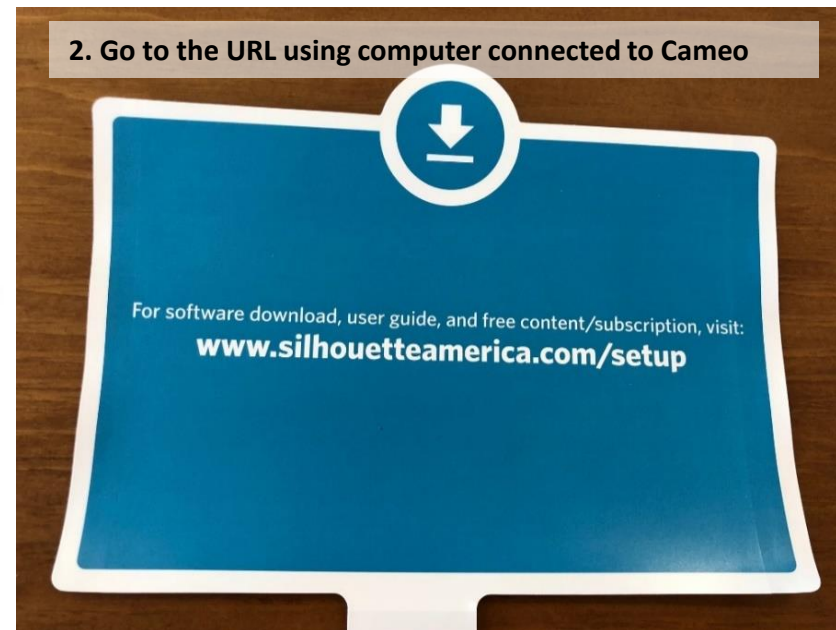
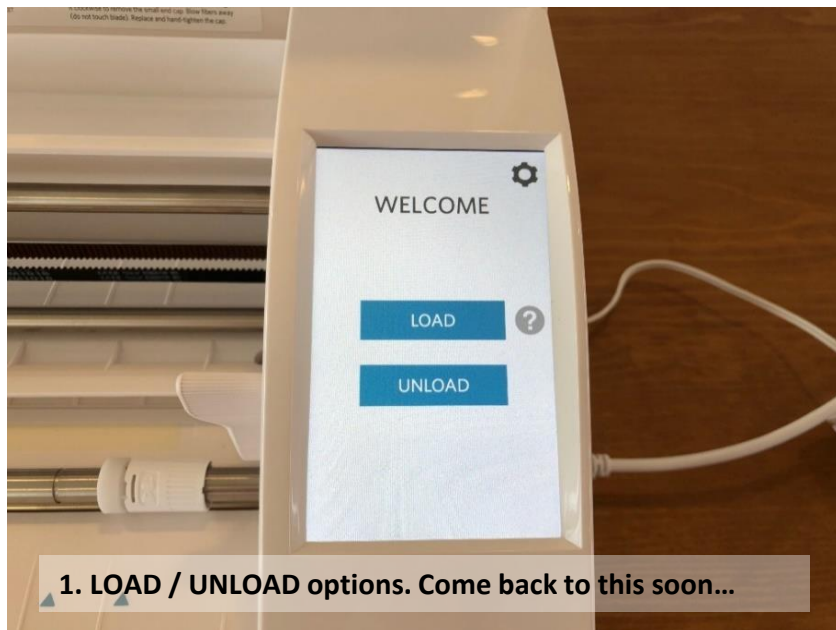
Getting Things Set Up Continued...





DOWNLOAD & INSTALL SOFTWARE

3. Silhouette Studio - Download & Install Software



3. Click Continue



Download & Install Software

You have selected setup for the **Silhouette CAMEO® 3**




Please follow the steps below to register your machine, download the software, and access further information and content for your Silhouette CAMEO® 3.

▶ Step 1: Register your Machine

Create Account

Your Silhouette account will be created automatically when you register below. Already have an account? Please [sign in](#) before registering.

name:	email:
<input type="text"/>	<input type="text"/>
password: 	confirm password:
<input type="password"/>	<input type="password"/>
address:	city:
<input type="text"/>	<input type="text"/>

5. Optional – Register for a Silhouette Account

You have selected setup for the **Silhouette CAMEO® 3**



Please follow the steps below to register your machine, download the software, and access further information and content for your Silhouette CAMEO® 3.

▶ Step 1: Register your Machine

▶ Step 2: Check the box contents and set up the Silhouette CAMEO® 3

▶ Step 3: Download & Install the Silhouette Studio® Software

▶ Step 4: Claim Your 1-Month FREE Silhouette Design Store Subscription

▶ Step 5: Access the FREE Library Shapes for your Silhouette CAMEO® 3

▶ Step 6: Learn to use your Silhouette machine

▶ Step 7: (OPTIONAL) Set up Bluetooth® on your Silhouette CAMEO® 3

6. Collapse the Menu and skip to Step 3 by clicking it.

▶ Step 2: Check the box contents and set up the Silhouette CAMEO® 3

▶ Step 3: Download & Install the Silhouette Studio® Software

a. Download the Silhouette Studio® software

Click on your computer type below to begin downloading the software:

MAC

WINDOWS

NOTE: If you already have the Silhouette Studio® software installed from a previous Silhouette machine, it is recommended to update the software to the latest version provided here.

b. Install the Silhouette Studio® software

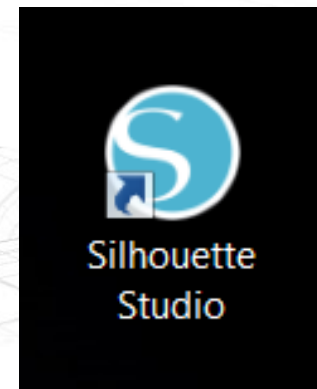
Once the download is finished, select to RUN the software set up and select the default installation options provided.

You may launch the software after installation is complete. You may launch the software at any time from the desktop icon created:

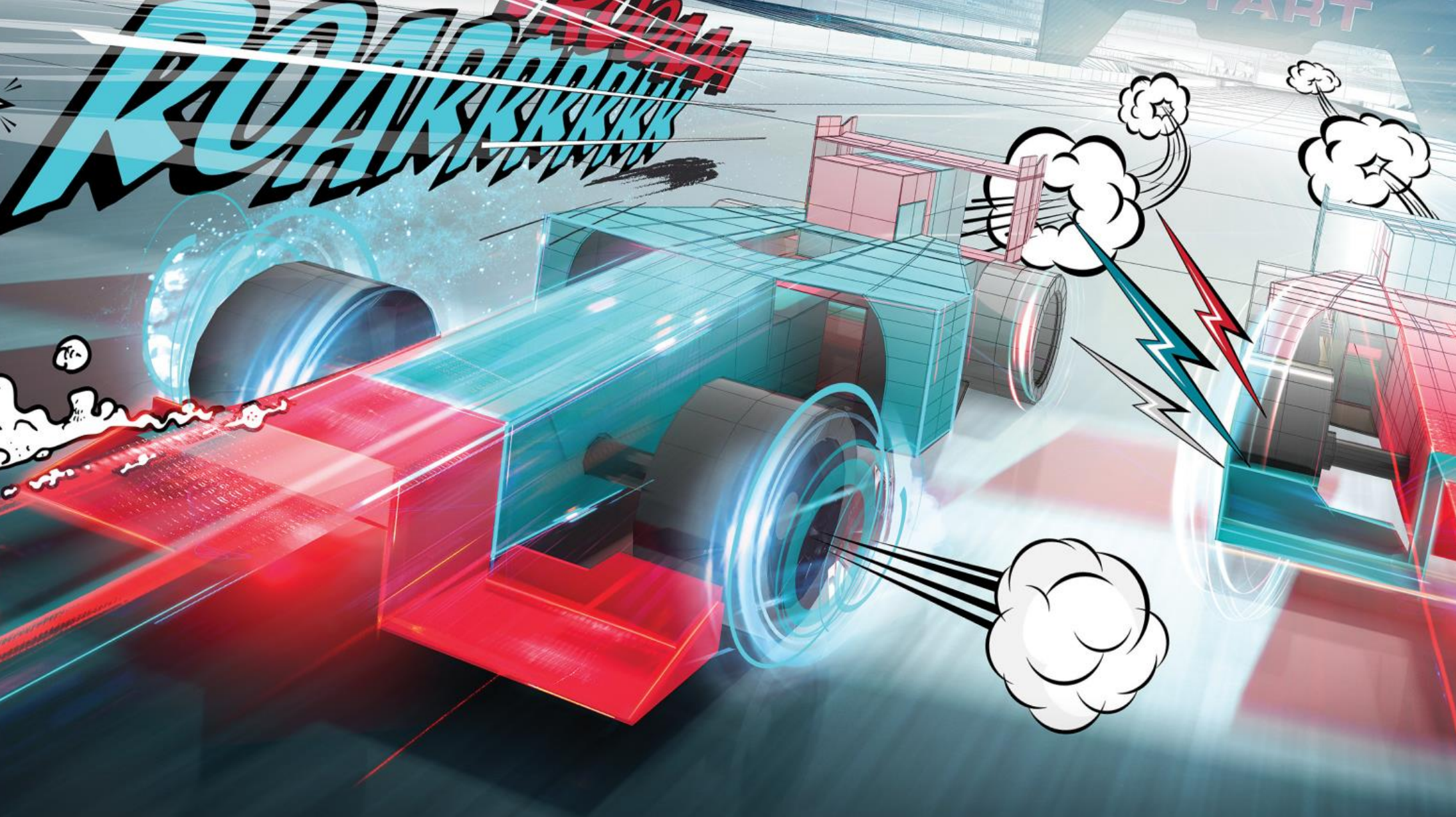


CONTINUE TO NEXT STEP

7. Click MAC or WINDOWS to download App and install

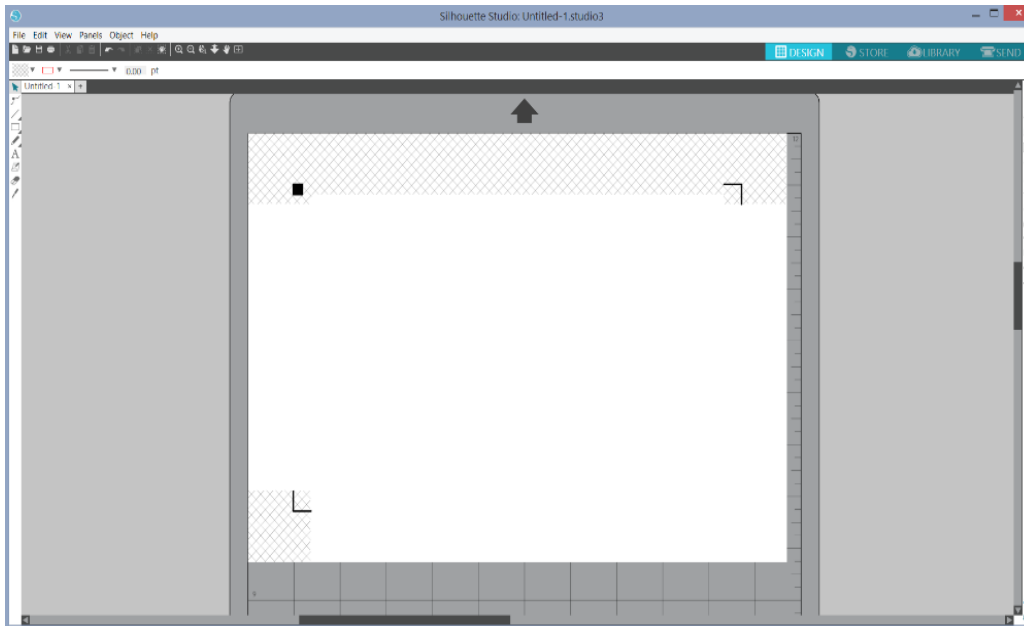


8. Find Silhouette Studio Icon and Open the App

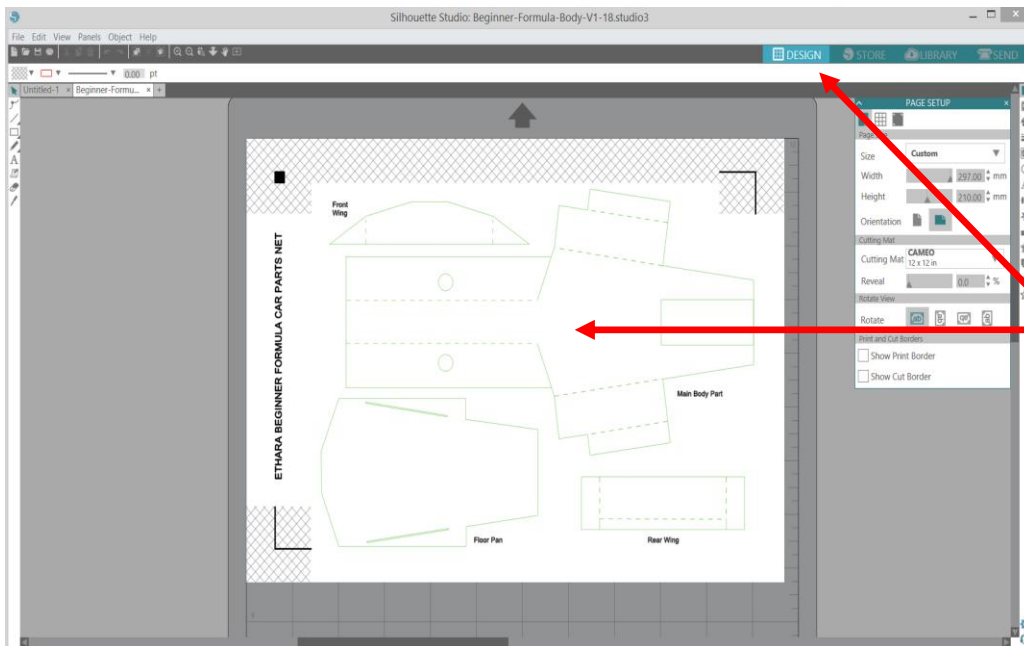


OPEN SOFTWARE & CUTTING FILE

4. Start Silhouette Software & Open Car Body Net File

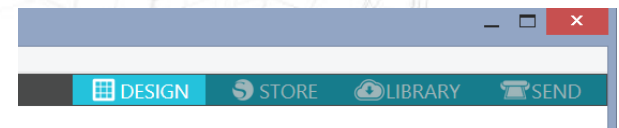


1. In Silhouette Studio App - Choose File > Open
2. Browse to the Silhouette Studio Ethara Car Body file to be cut

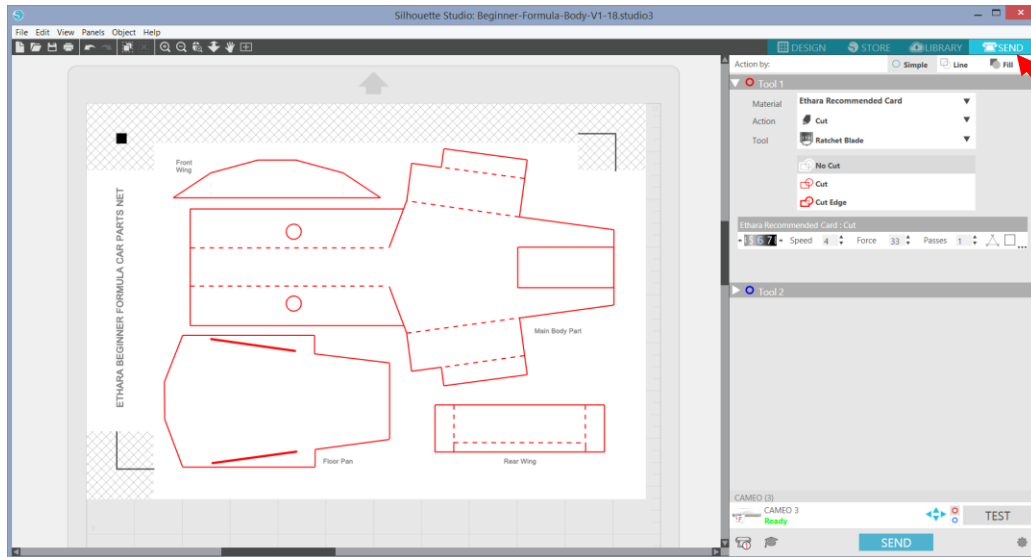


4. File is Open and displayed in the 'Design' Workbench by default

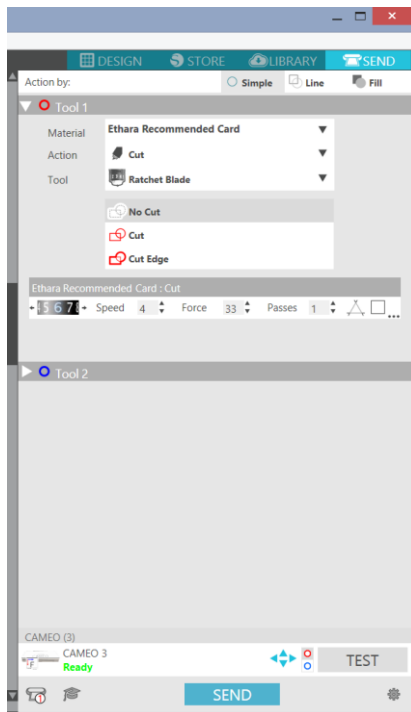
5. There is no need to do any Design work



Open Software & Car Body Net File

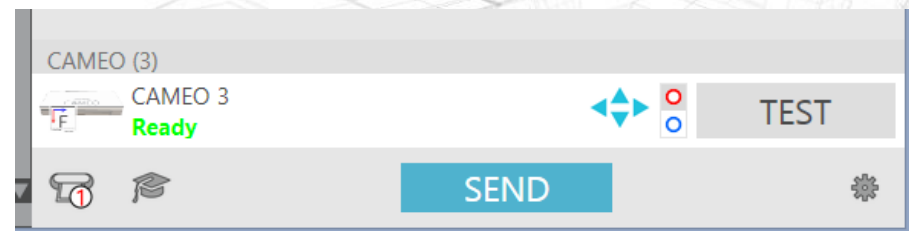


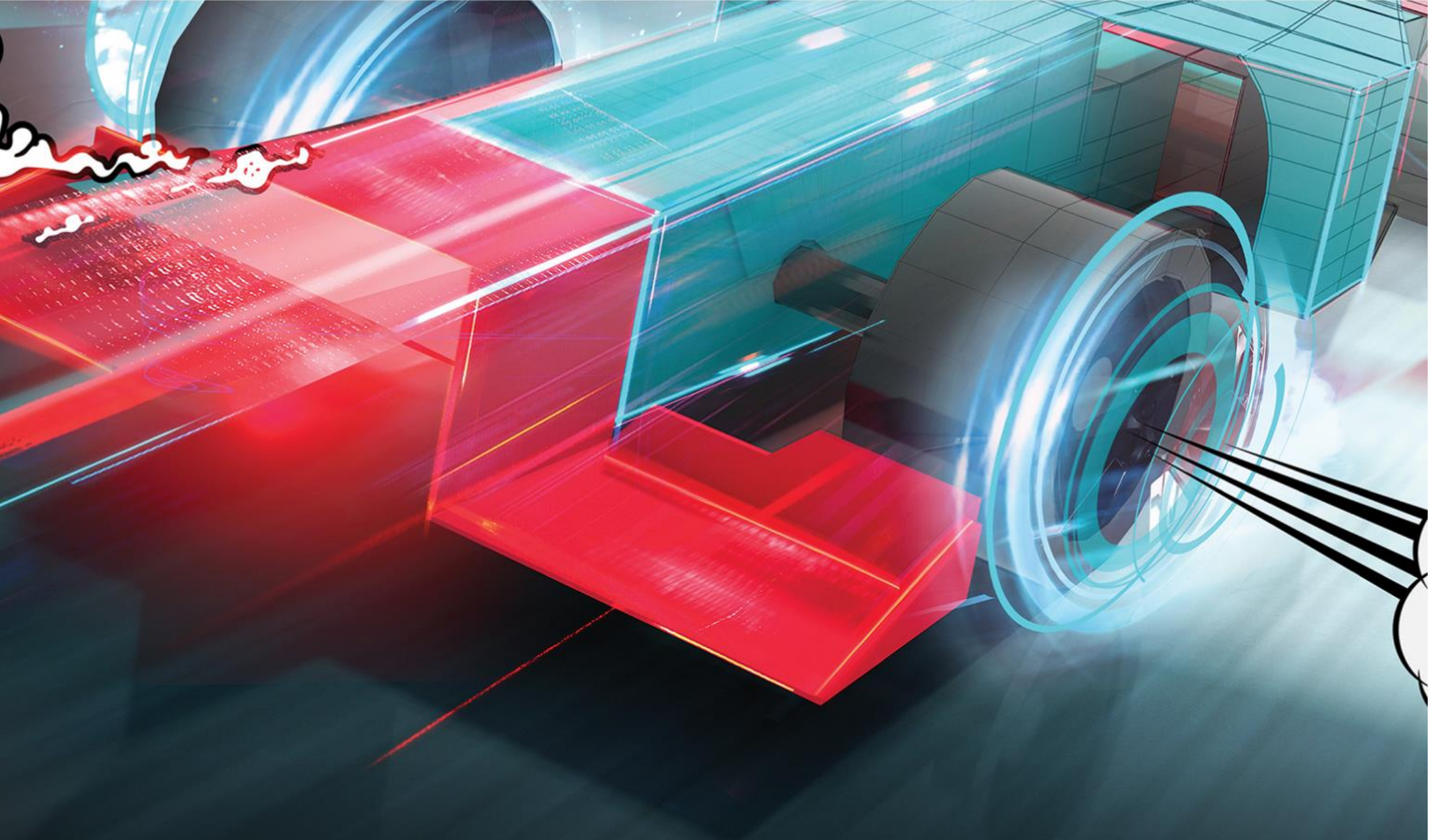
6. Select 'SEND' workbench by clicking on 'SEND'



7. Everything displayed in the SEND workbench and all cut settings are pre-configured and ready to go. Don't change anything.

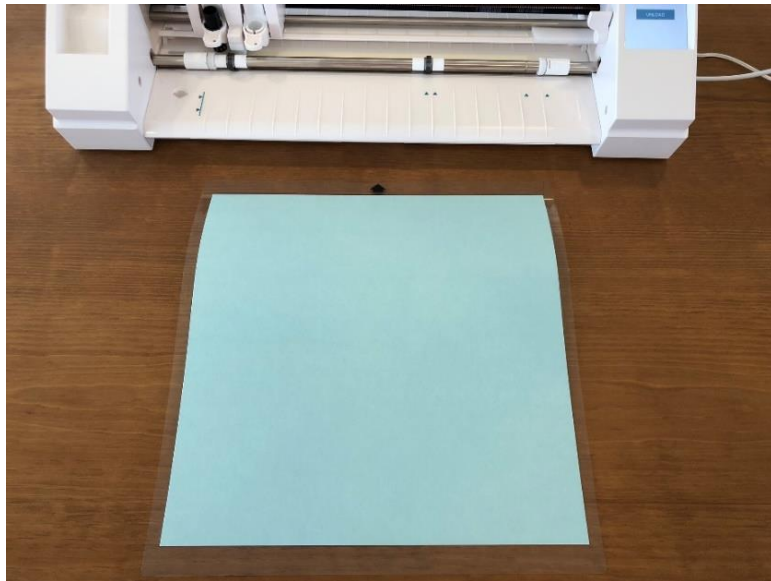
8. Check the bottom of the panel confirms CAMEO connected and Ready





USING THE CUTTING MAT

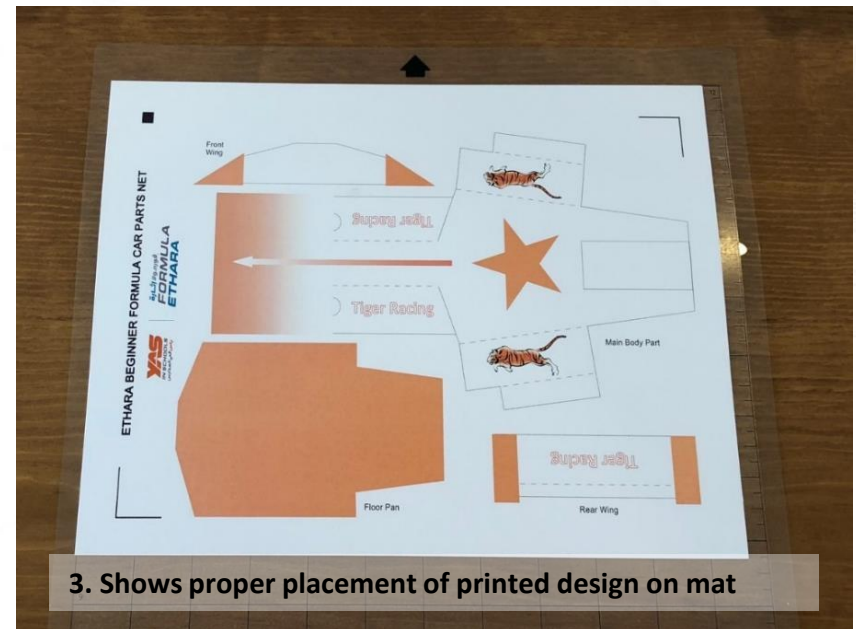
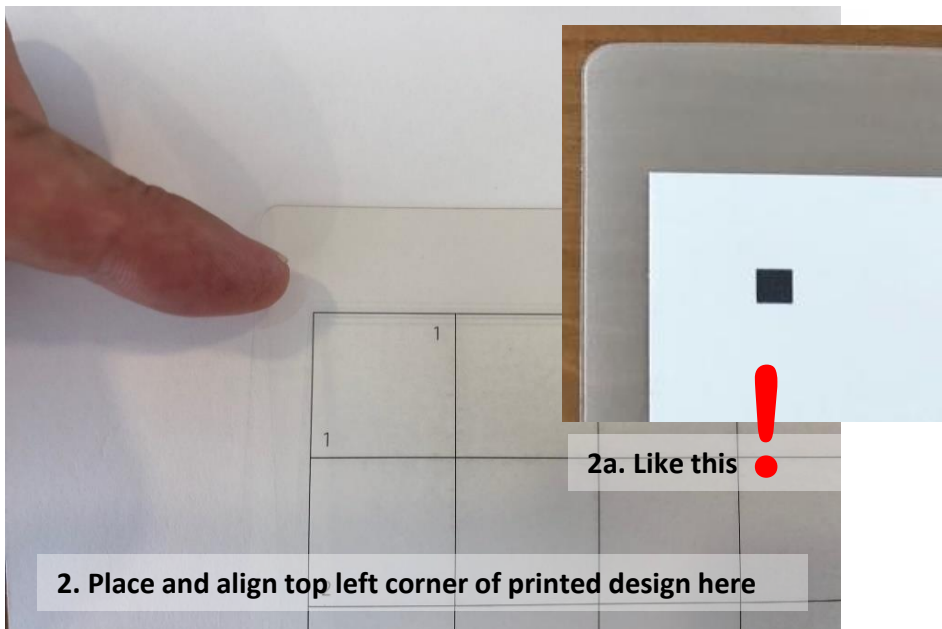
5. TIPS – Working with the cutting mats



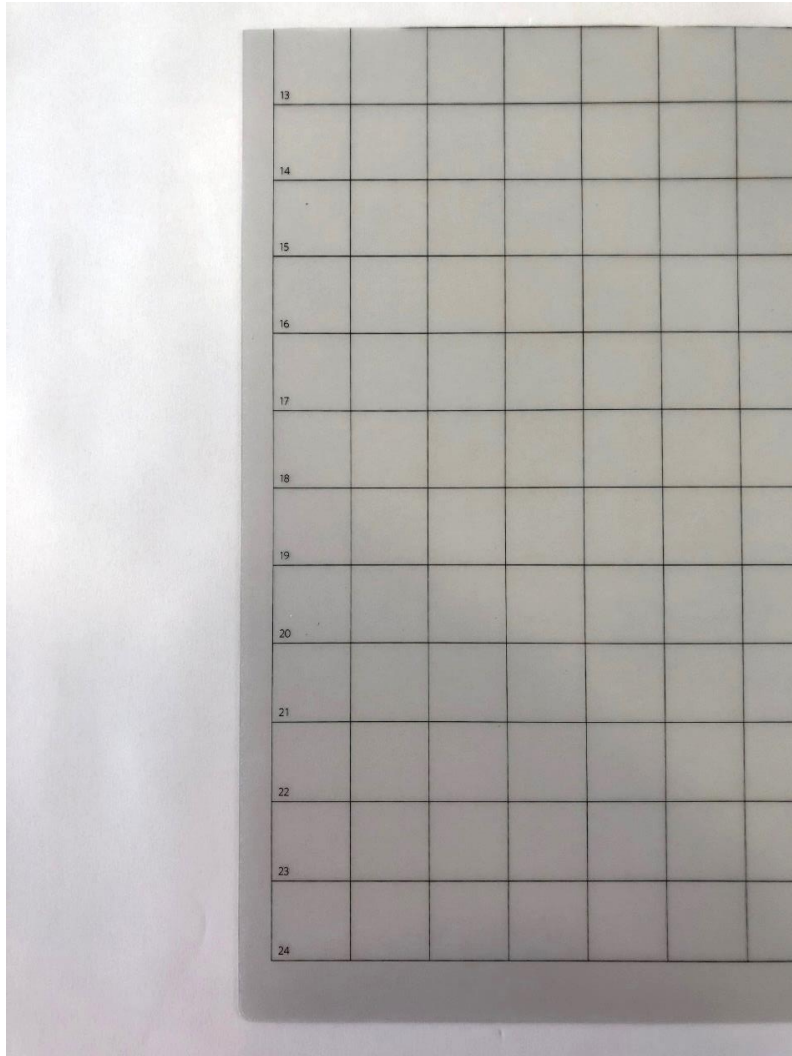
There are two types of mats. The standard mat, supplied with the machine (left). A second mat (right) as a spare and to help speed up the cutting process. Whilst the CAMEO is cutting one design, you can be placing another design on the second mat ready for cutting next

1. **New Cutting Mats** – these are very sticky. Just place your printed designs on the mat lightly or it will be very difficult to remove!
2. **Older Mats** – as you use the mat it will become less sticky and then it may be necessary to apply more pressure when placing your printed design on the mat
3. **Mats Numbered 13 – 24**: Rotate the mat round 180 degrees to make the corner with the Silhouette logo as the top left
4. **Keep Mat Surface Clean!** – Be sure to place the protective sheet back on your cutting mat when not in use to keep it clean.
5. **Mat is getting badly damaged when cutting** – see page 11 of this guide

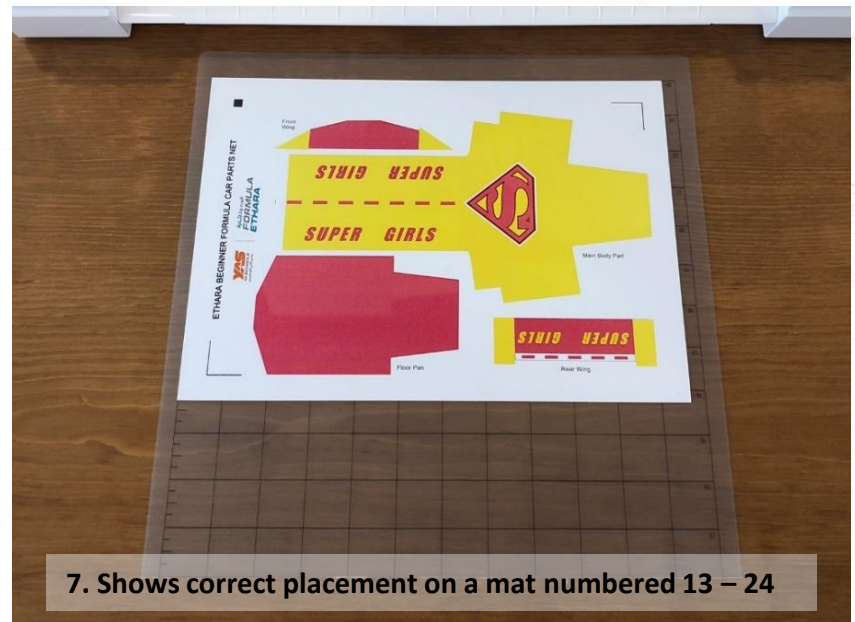
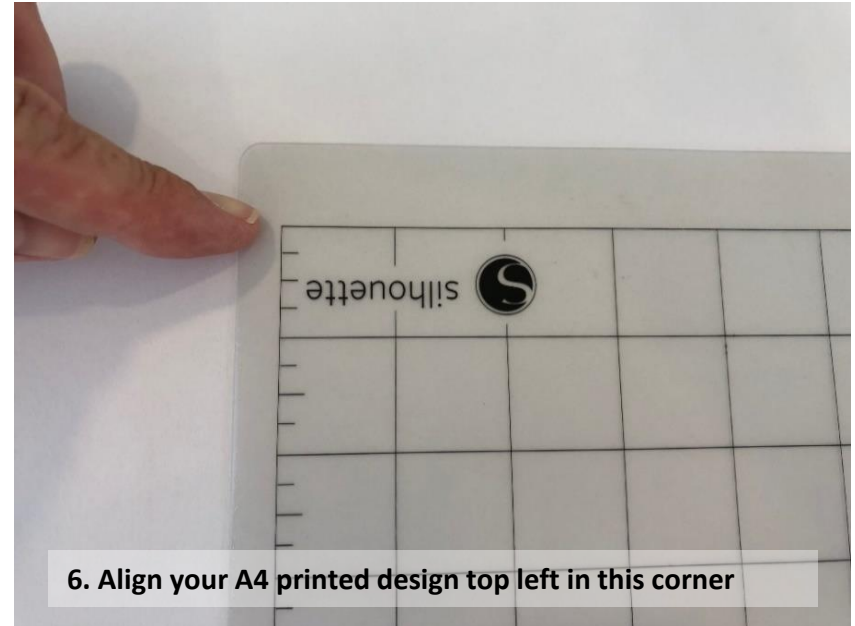
6. Place Printed Design on Cutting Mat

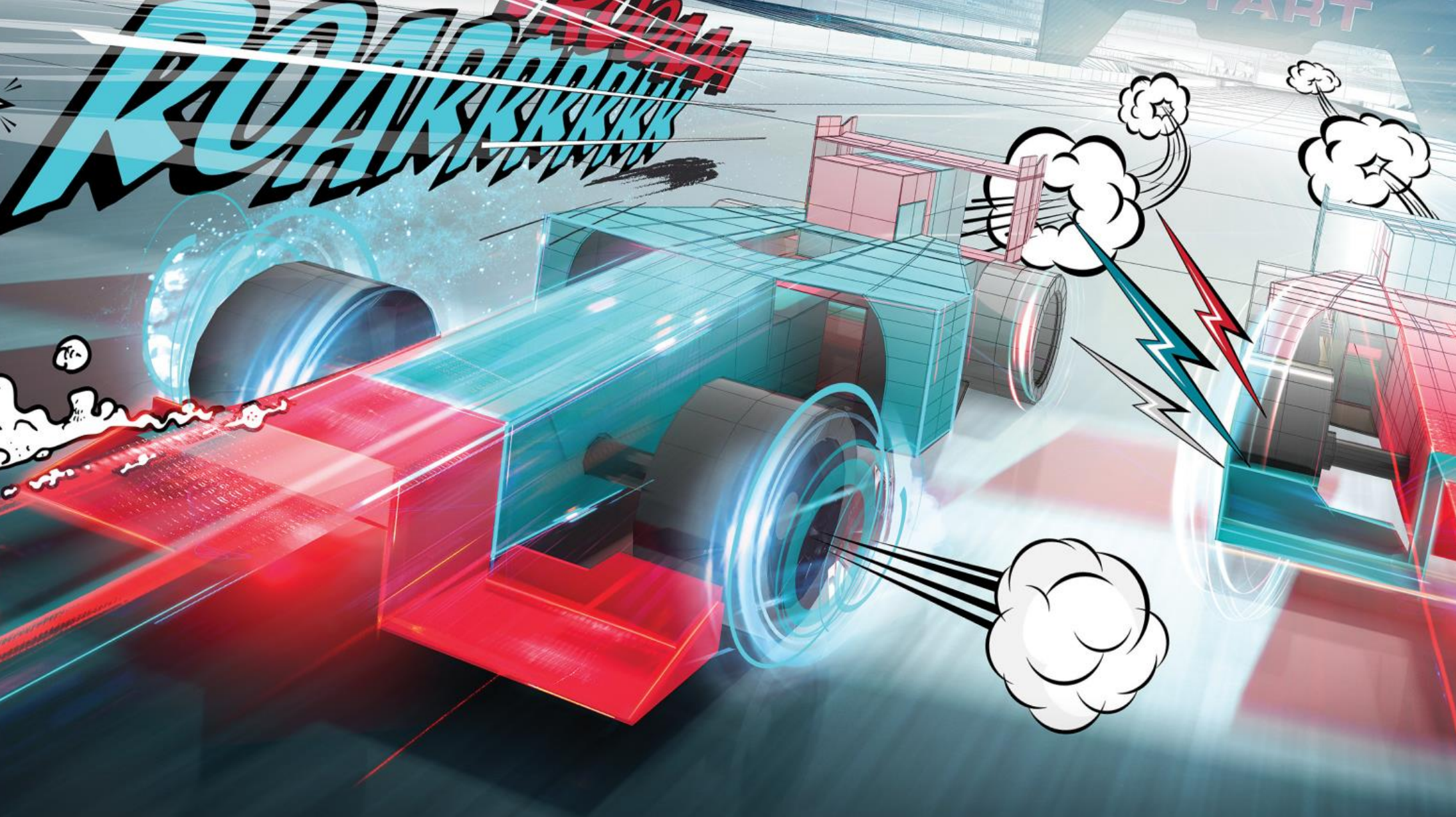


Place Printed Design on Cutting Mat



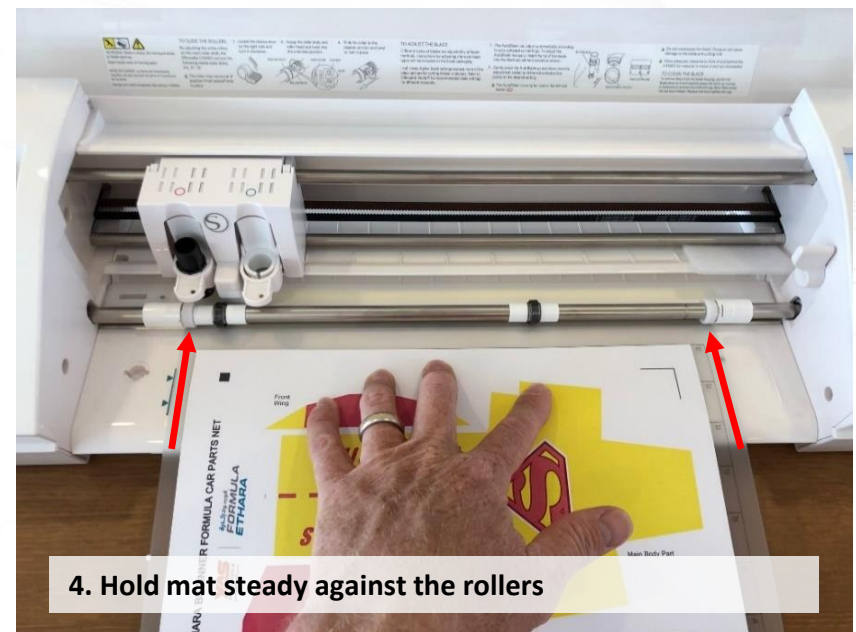
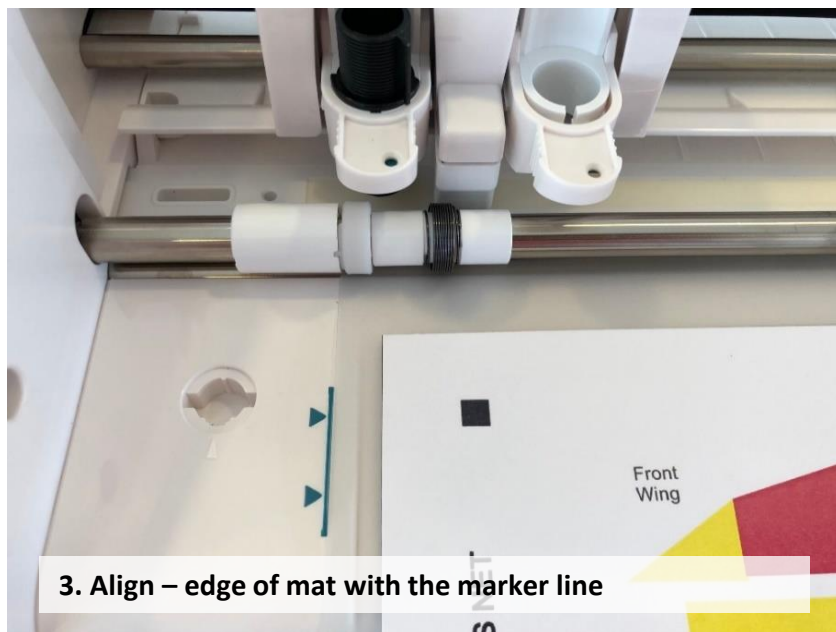
5.NOTE - If the cutting mat has numbers on the left side from 13 – 24 (inch). Turn the mat around 180 degrees so number 24 is at the top right corner...





LOAD CUTTING MAT IN MACHINE

7. Load the Cutting Mat in the CAMEO



Load the Cutting Mat in the CAMEO



5. With your other hand – press 'LOAD'



6. Rollers rotate to feed in the mat. Check it goes straight



7. Screen says READY

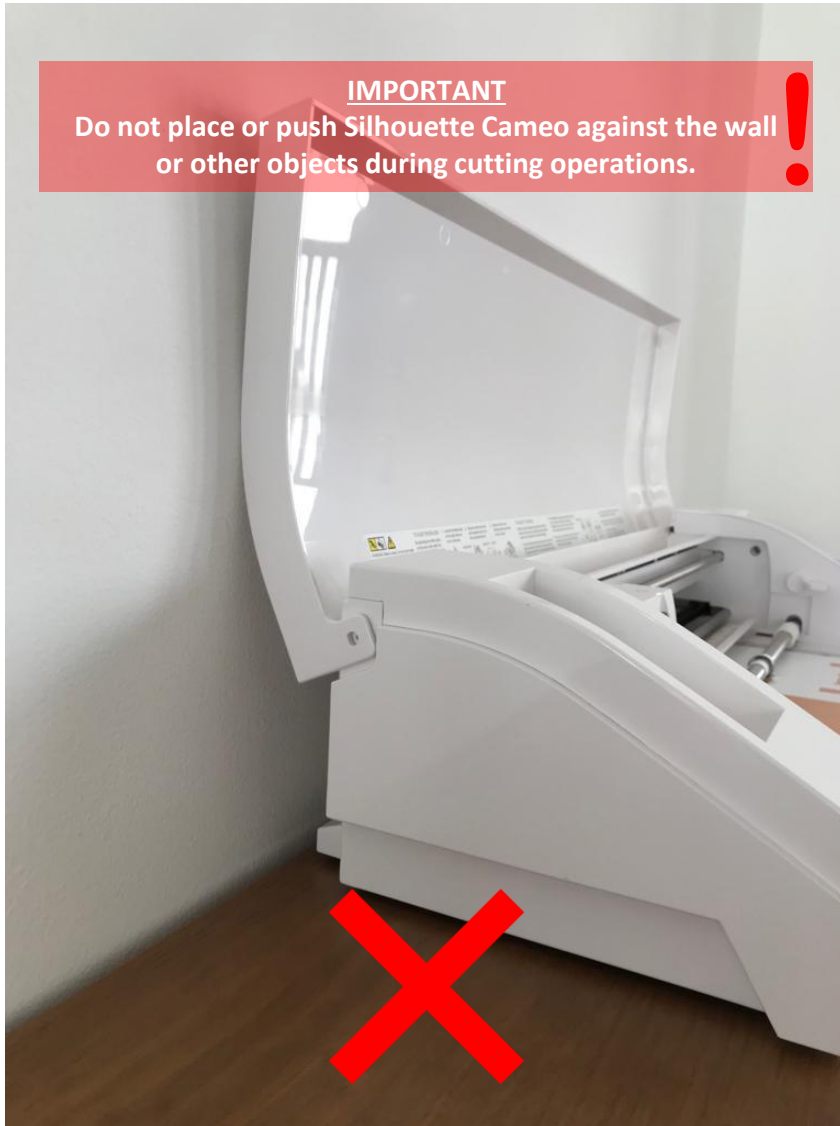


8. Registration - Arrows show print & cut registration marks

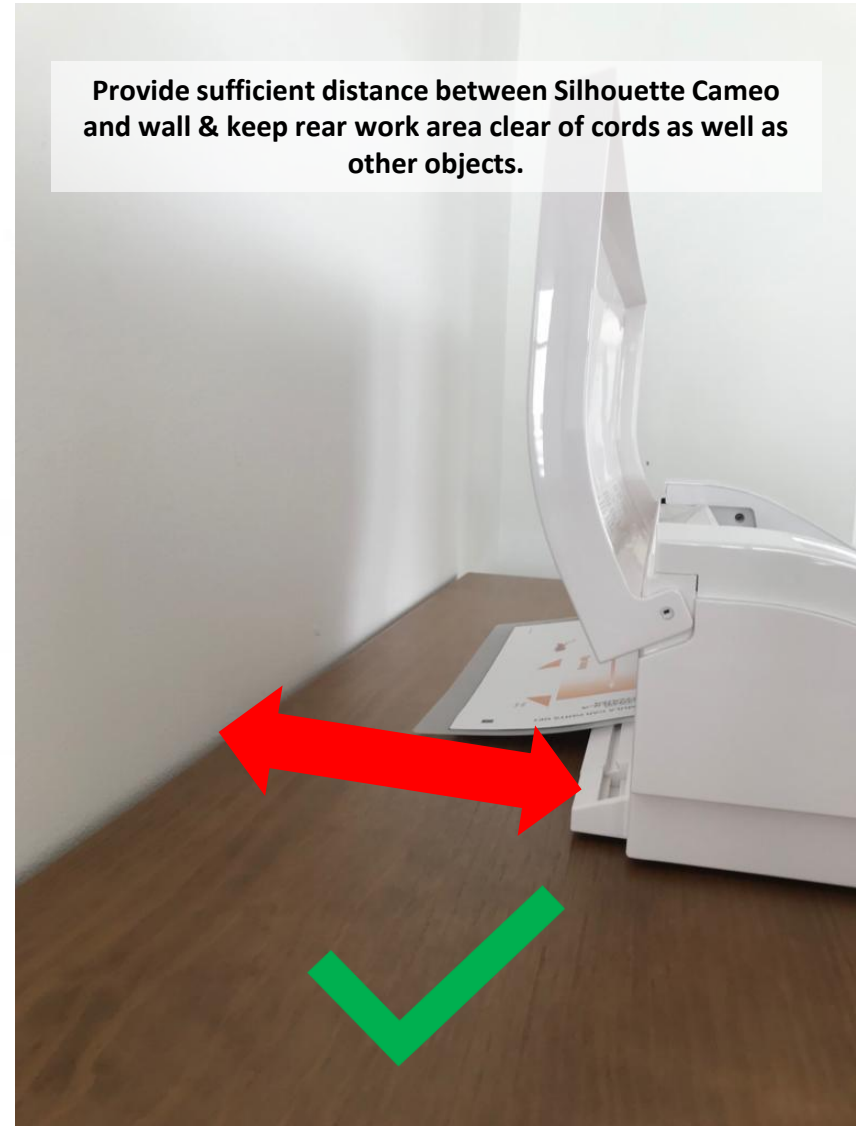
Cutting Mat Clearance

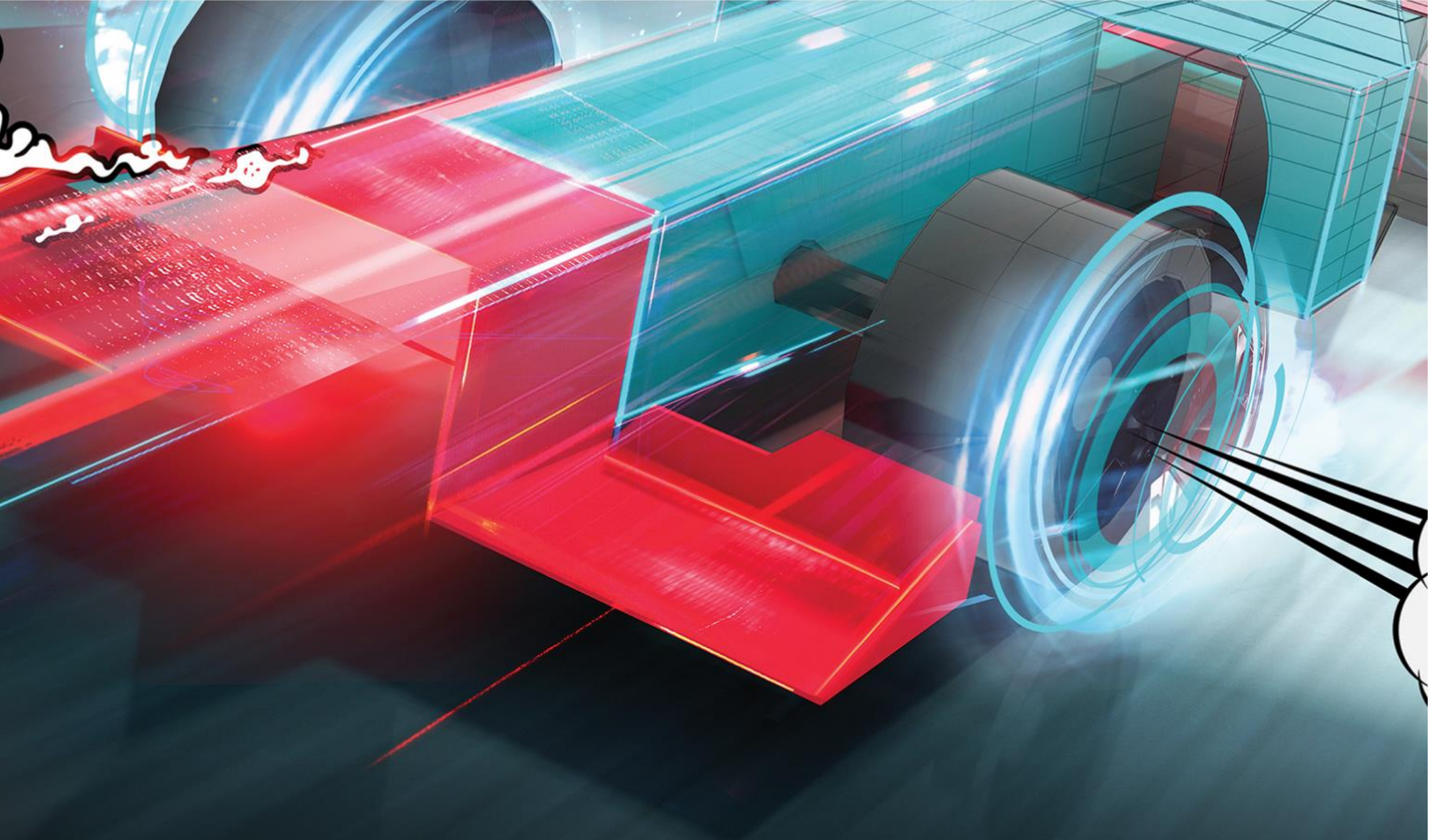
IMPORTANT

Do not place or push Silhouette Cameo against the wall or other objects during cutting operations. !



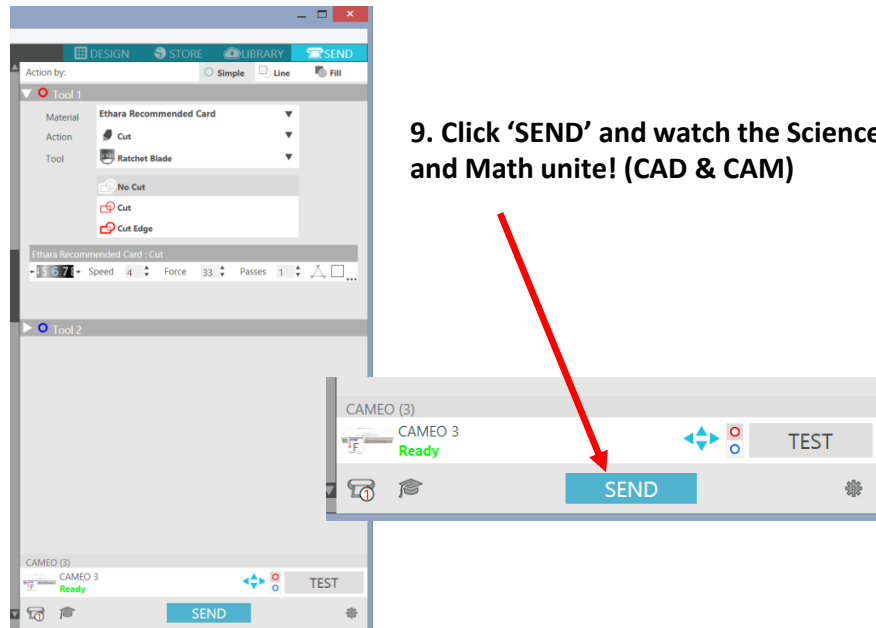
Provide sufficient distance between Silhouette Cameo and wall & keep rear work area clear of cords as well as other objects.





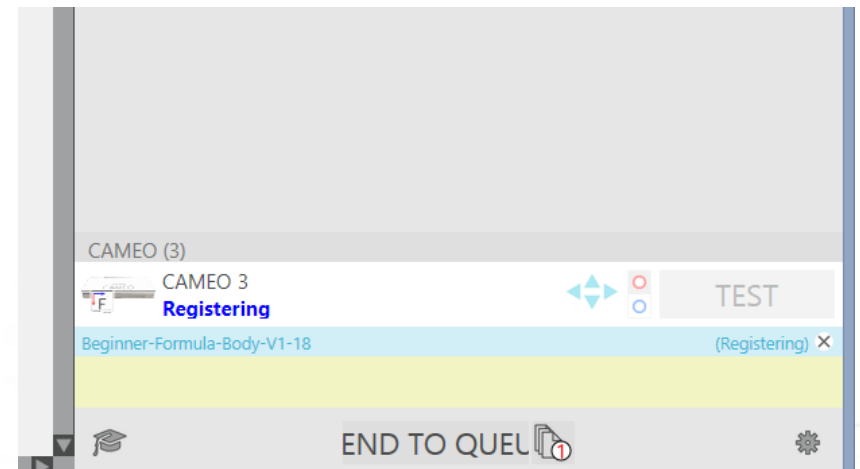
SEND & CUT

8. Send Design and Cut

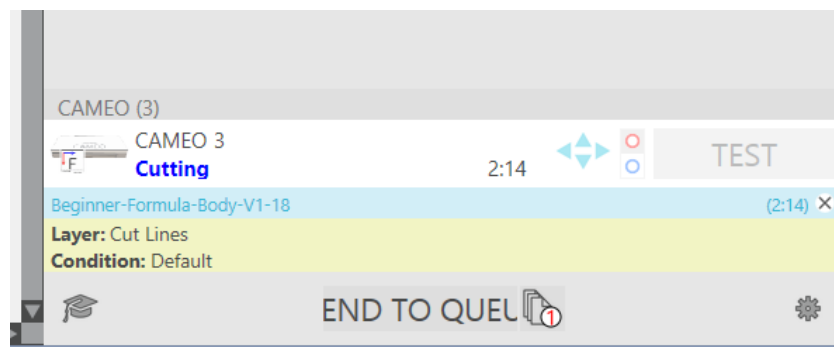


9. Click 'SEND' and watch the Science and Math unite! (CAD & CAM)

10. Detection of Registration Marks begins



11. Cutting starts automatically once registration has completed successfully.



About Registration Mark Detection:

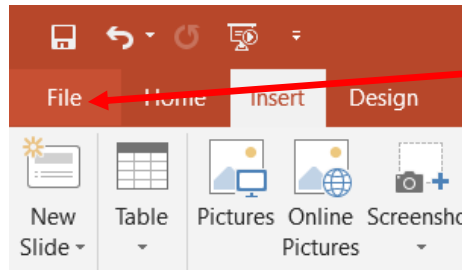
This is when the CAMEO moves the sensor (located in the middle of the blade carriage) over the printed design to accurately locate the black 'registration marks' that are printed in the top left corner (black square), bottom left corner (right angle) and top left corner (right angle).

Detection of registration marks ensures accurate cutting of the design relative to the printed graphics on the page.

The software 'tells' the machine the approximate location for the marks. The machine checks in those areas and accurately detects the marks.

If the marks are unclear, in the wrong approximate position or your design was placed on the mat incorrectly, detection may not be possible and will fail.

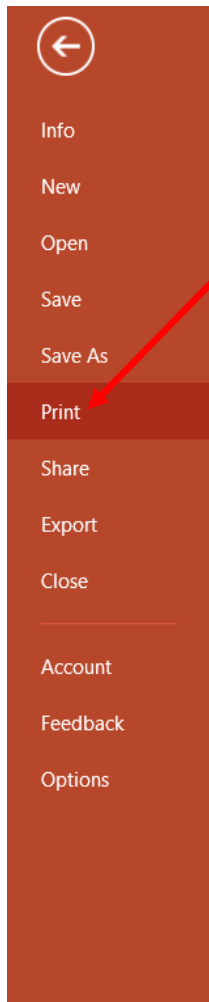
Printing Tips - Check A4 size page!



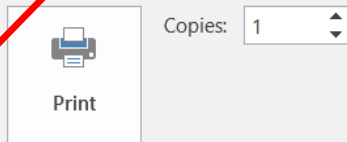
1. Click "File"

IMPORTANT – Check that car body template designs are printed the correct size. If a paper size other than A4 is chosen, the design will be scaled and then won't be cut out correctly by the Cameo

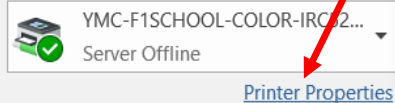
2. Click "Print"



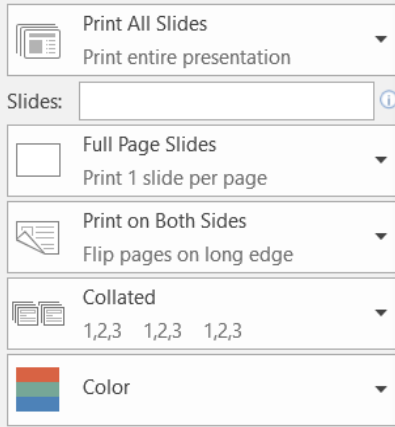
Print



Printer



Settings

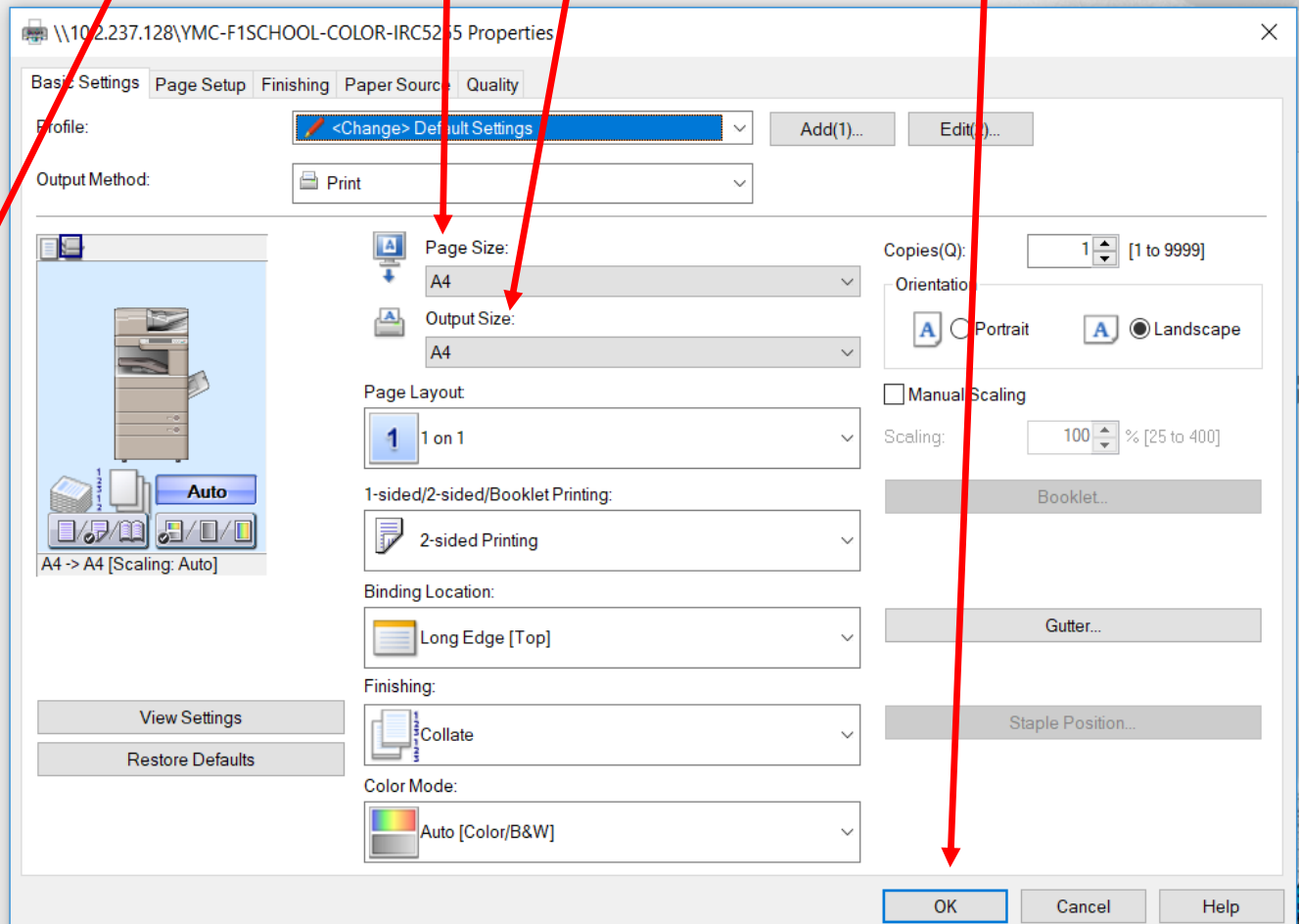


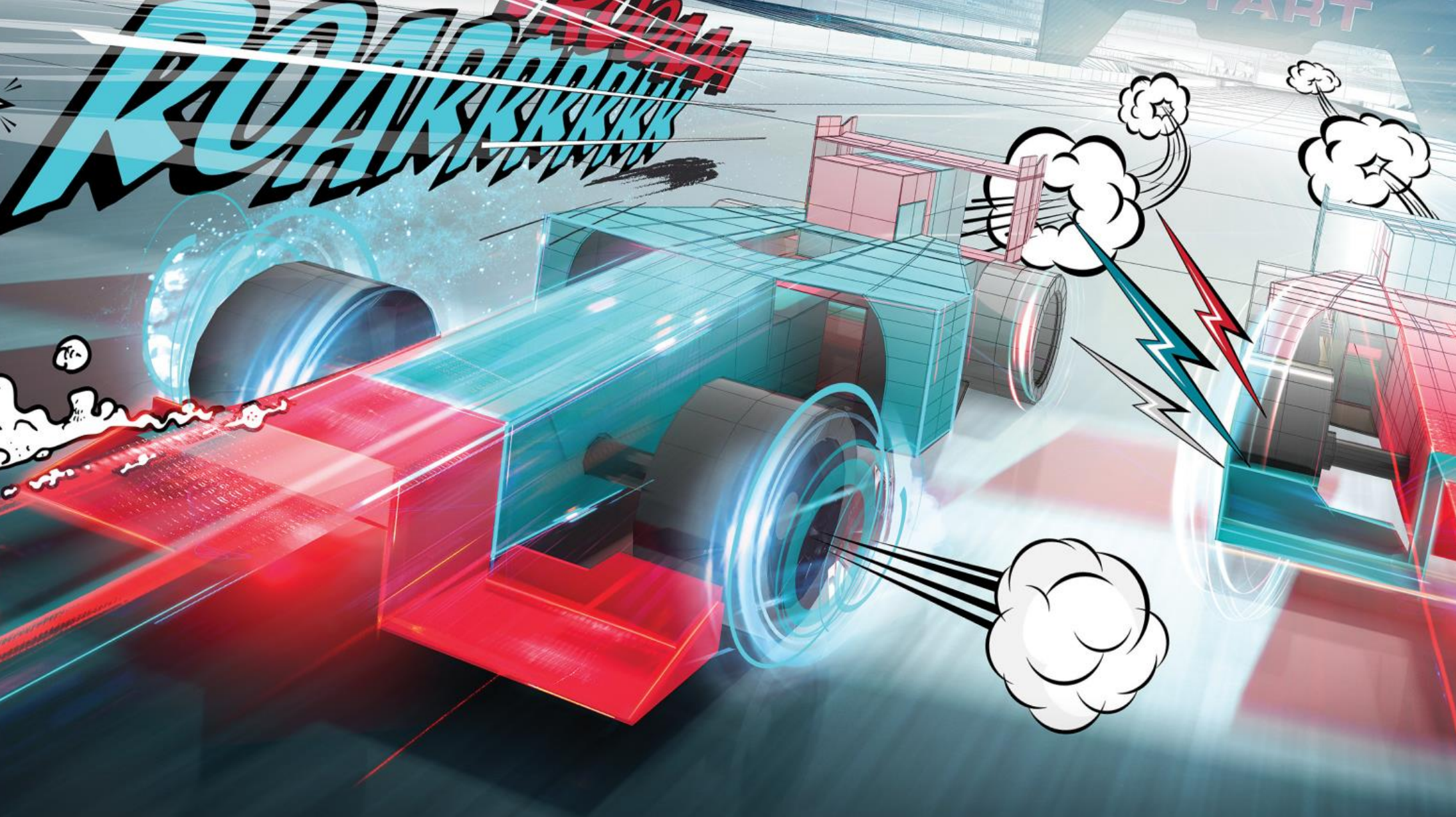
3. Click "Printer Properties"

4. "Page Size" Select A4

5. "Output Size" Select A4

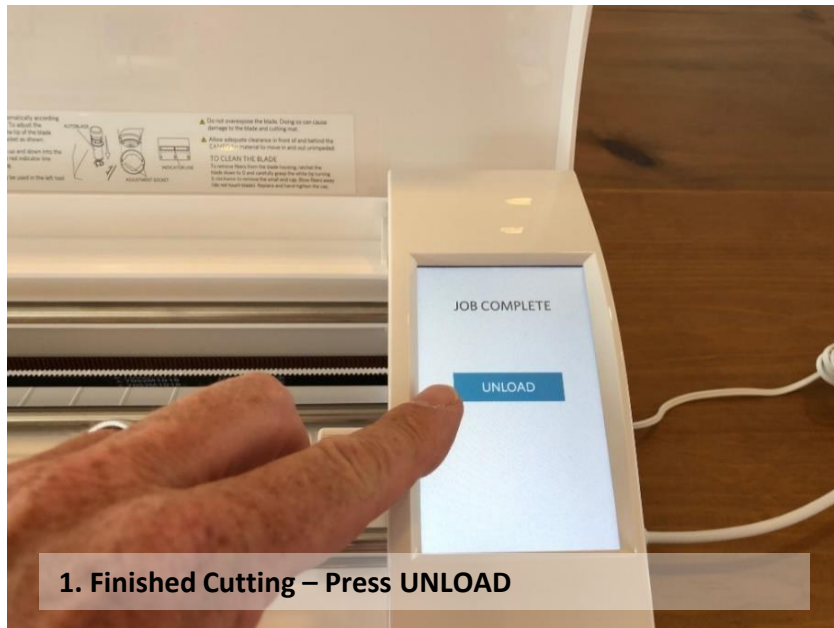
6. Click "OK" once done





UNLOAD & WEED

LAST STEP - Unload and 'Weed'



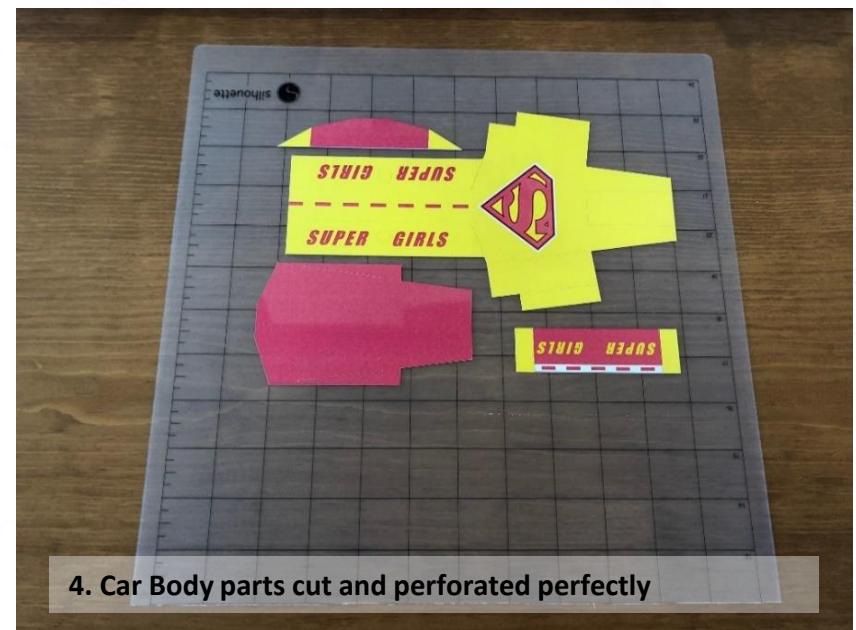
1. Finished Cutting – Press UNLOAD



2. CAREFULLY – Remove the waste material

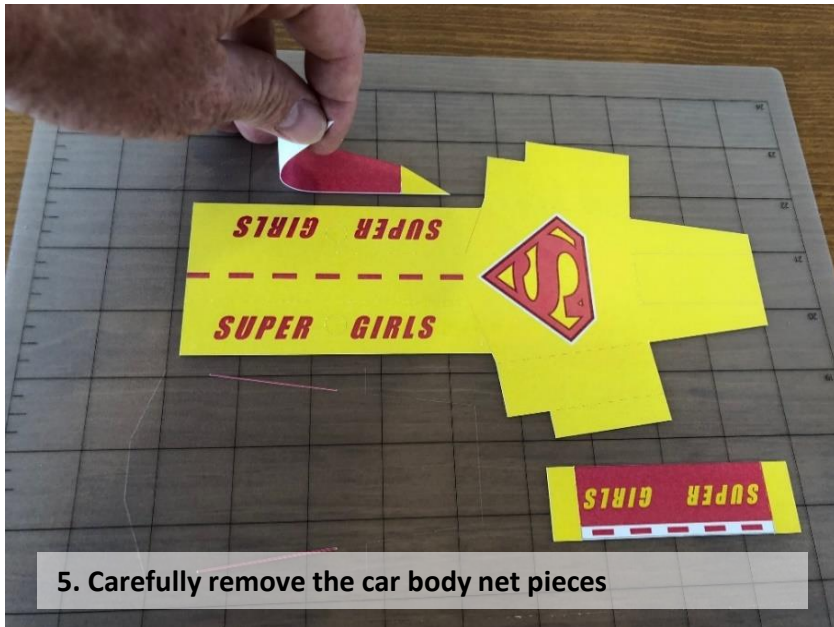


3. Peel gradually to not tear you design

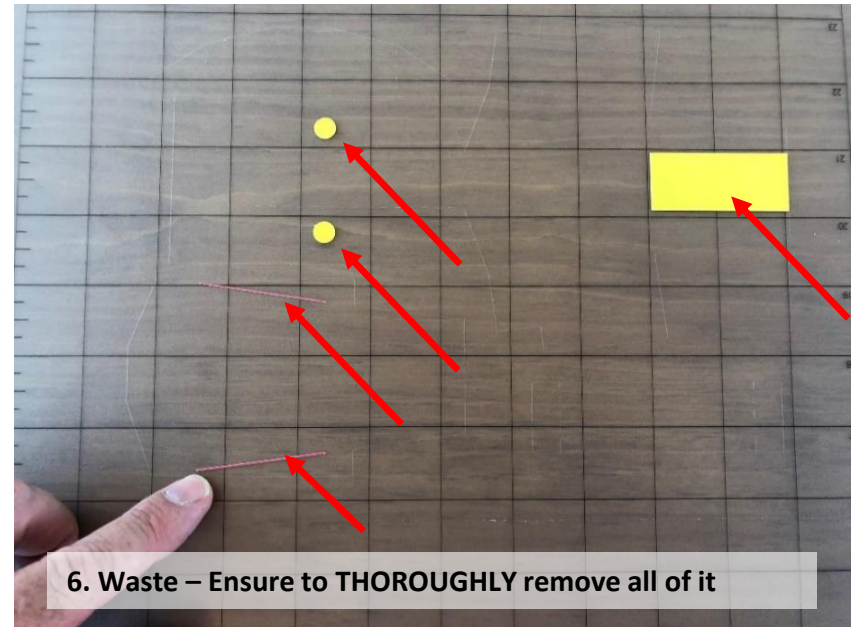


4. Car Body parts cut and perforated perfectly

FINISH UP - Unload and 'Weed'



5. Carefully remove the car body net pieces



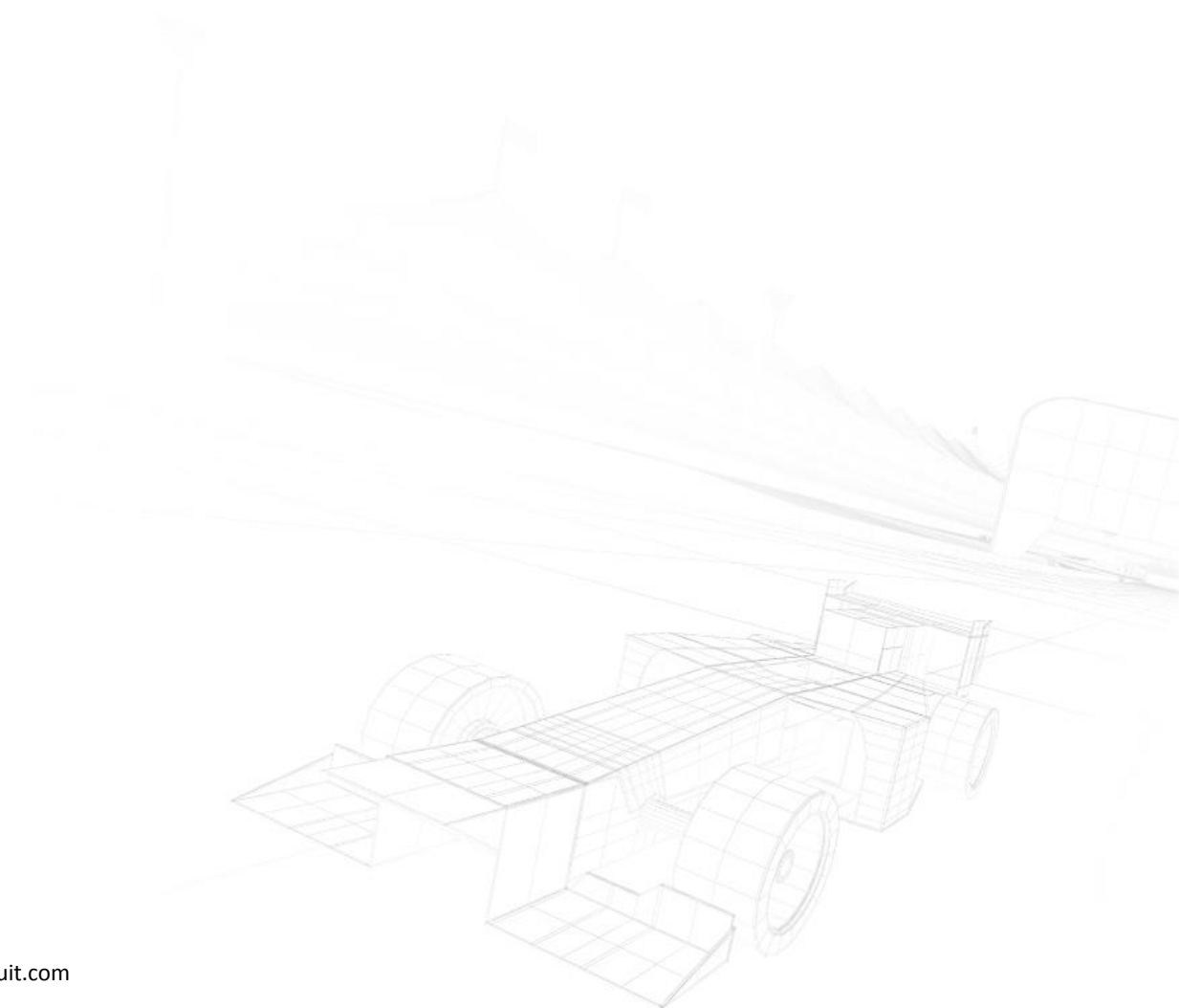
6. Waste – Ensure to THOROUGHLY remove all of it



7. Finished Cutting – Cover Mat with Protector Sheet



8. Always keep protector sheet on mat when not in use



FOR MORE INFORMATION
Call 800 YAS(927) | Email yasinschools@ymc.ae | Visit www.yasmarinacircuit.com